



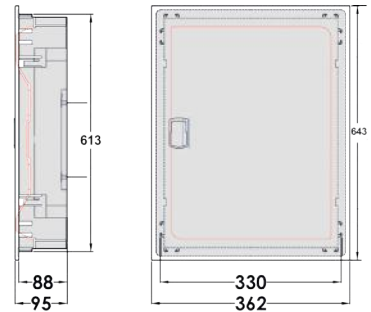
# Flush mounting IT board available for Hollow as well as Solid walls

Thermoplastic material with metallic door



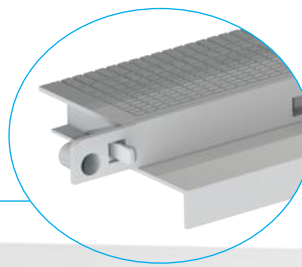
120°C opening door.

- Complies with directive 2014/35/UE.
- Complies with directive 2011/65/UE (RoHS).
- In accordance with EN 62 208.
- IP40 (door closed). IK07.
- Class II.
- GWT 650 °C / For holow walls 850 °C.
- RAL 9003 matt.



Hole to align frame and door.

2 Bubble levels.

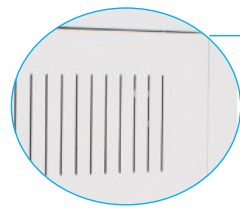


Bush part pre-cut for an easy cutting of cable entry.

Reversible frame & door.

Large screw minimises wall flaws.





Grid for heat dissipation.



**Retractable locking system**

Available metal keys.  
(Accessory not included)



**Extra flat frame: 7 mm**

Elegant and discrete design.

**Accessories included**

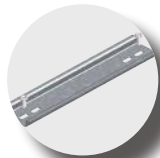
Protection against plaster



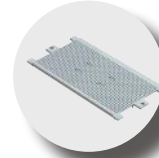
Instructions for use



1 DIN Rail



2 Multiperforated plate assembly



Ref. PL-MP28

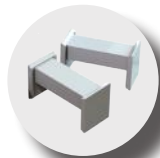
**Accessories not included in all references**

Key lock kit with 2 metal keys



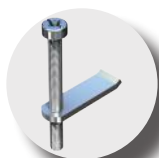
Ref. CER-MP28

2 Link up kit



Ref. U-MP28/2

4 Clamping support hollow walls



Ref. G-MP28/4\*

4 Brackets for wall fixing



Ref. SOP-MP28/4

Reference	USE - DESCRIPTION	Accessories INCLUDED		Pack / Carton	Net Price
		Ref.	Description		
MP42-IT	Ref. Solid wall	SOP-MP28/4	Brackets for wall fixing	1/3	
MP42HH-IT	Ref. Hollow Walls	G-MP28/4	Clamping support hollow walls	1/3	

