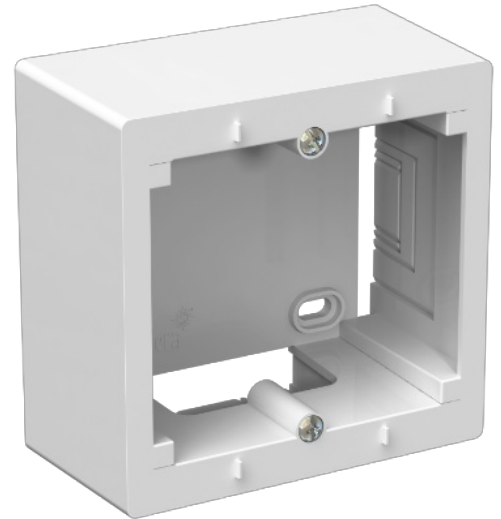


## Surface mounting box for the Europa series. Expandable. White colour.

Surface mounting box for the Europa series. Expandable. White colour. Dimensions 85 x 83 x 43 mm. Inputs for 10x16, 10x20, 16x25 and 25x40 mm trunking.



### Features

Common applications	Indoor domestic / tertiary environment (Interior of home, offices, shops, etc.)
Mechanism type	Box for surface mounting
Type of installation	Surface
Dimensions	85 x 83 x43
Frame color	White

### Technical data

Fire resistance (GWEPT)	850 °C
Heat resistance (Ball pressure)	70/125 °C
Free of halogens	Yes

### Regulations

CE marking	Yes
UK marking	Yes
CMim marking	Yes
According to Regulations UNE/EN	UNE-EN 60670-22:2007
In accordance with the Low Voltage Electrotechnical Regulations (REBT)	Yes
According to European Directive 2014/35 / EU. Low voltage directive	Yes

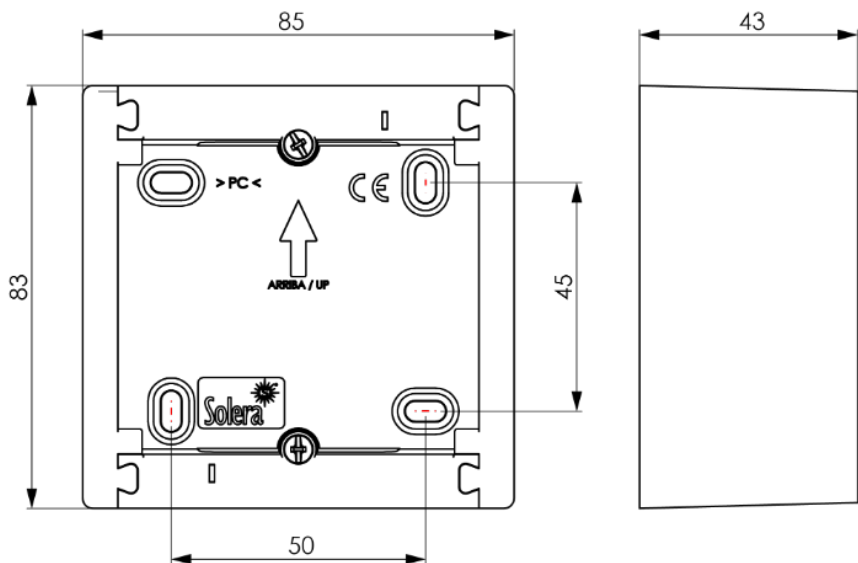
## Sustainability

According to European Directive 2011/65/UE (RoHS)	The Directive 2011/65/EU (RoHS II) is not applicable as it does not correspond to the definition of Electrical and Electronic Equipment (EEE) as per article 3.1
According to European Directive 2012/19/UE (RAEE2)	Not applicable because it does not meet the definition of Electrical and Electronic Equipment (EEE) as described in Article 3.1(a) of Directive 2012/19/EU (WEEE II).

## Logistics and packaging




Unit EAN code	8423220096233
EAN code container	8423220095861
EAN code packaging	18423220095868
Units packaging	12
Units carton	96
Pallet Units	3360
Packaging Measurements cm	17,8x14,3x19
Packaging Measures cm	59,5x37,5x20
Unit weight (g)	67,8
Container Weight (Kg)	0,9101
Packaging Weight (Kg)	7,8208
Tariff code	85366990

## Sketch





## Documentation and downloads

-  Safety Information (0.38MB)
-  Flush switches of Eruopa range (Solera)
-  Assembly flush switches form Europa range (Solera)