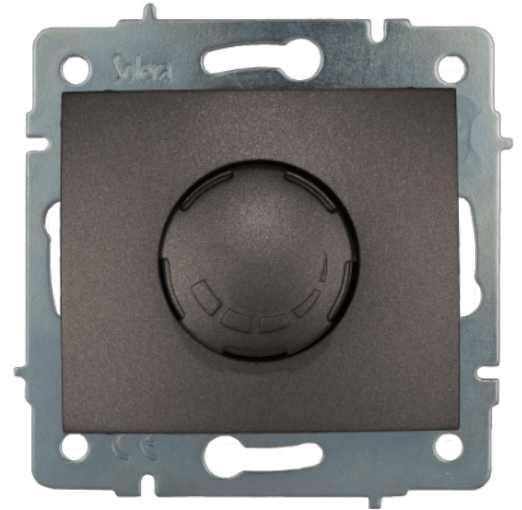


LED dimmer. Flush. Graphite Colour

LED dimmer. Flush. Graphite colour. Without frame. Screw connection.



Features

Common applications	Indoor domestic / tertiary environment (Interior of home, offices, shops, etc.)
Mechanism type	Regulator
Type of installation	Flush
Nominal voltage	250V~ (50/60 Hz)
Connection type	Screw connection
Flexible cable section	Up to 2.5 mm ²
Rigid cable section	Up to 2.5 mm ²
Type of operation	Rotary
Power	3-250 W
With fixing claws	Yes

Technical data

Fire resistance (GWEPT)	850 °C
Heat resistance (Ball pressure)	70/125 °C
Free of halogens	Yes

Regulations

CE marking	Yes
UK marking	Yes

CMim marking	Yes
According to Regulations UNE/EN	UNE-EN 60669-2-1:2005
In accordance with the Low Voltage Electrotechnical Regulations (REBT)	Yes
According to European Directive 2014/35 / EU. Low voltage directive	Yes

Sustainability

According to European Directive 2011/65/UE (RoHS)	Yes
According to European Directive 2012/19/UE (RAEE2)	Yes
According to Regulations (RoHS)	UNE-EN IEC 63000:2022

Logistics and packaging

Unit EAN code	8423220235519
EAN code container	8423220235502
EAN code packaging	18423220235509
Units packaging	10
Units carton	120
Pallet Units	4320
Packaging Measurements cm	28,3x15,5x7,8
Packaging Measures cm	48x31x32,5
Unit weight (g)	86
Container Weight (Kg)	1,0164
Packaging Weight (Kg)	12,9088
Tariff code	85366990

Documentation and downloads



[Commercial doc. \(3.28MB\)](#)



[Safety Information \(0.38MB\)](#)



[Flush switches of Eruopa range \(Solera\)](#)



[Assembly flush switches form Europa range \(Solera\)](#)