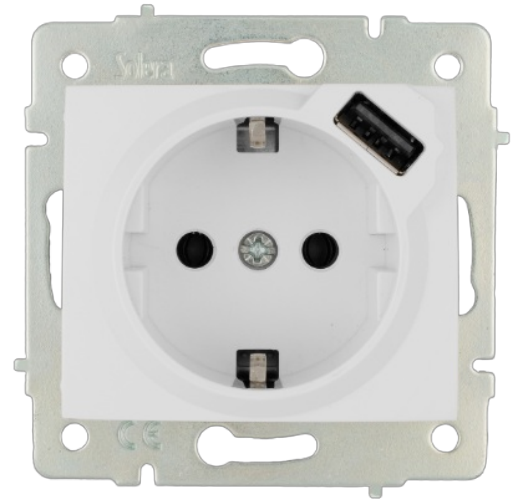


## Socket 2P+E, 16A 250V ~ + USB socket 2.1A 5V.

Socket 2P+E, 16A 250V ~ + USB socket 2.1A 5V. Flush. White colour. With shutter. Without frame. Quick connection. Dimensions 83x81 mm.



## Features

Common applications	Indoor domestic / tertiary environment (Interior of home, offices, shops, etc.)
Mechanism type	Fixed base + USB
Type of installation	Flush
Rated current	16A - 2,1A <sub>dc</sub>
Nominal voltage	250V~ (50/60 Hz) - 5V <sub>dc</sub>
Connection type	Fast connection
Flexible cable section	Up to 2.5 mm <sup>2</sup>
Rigid cable section	Up to 2.5 mm <sup>2</sup>
With fixing claws	Yes

## Technical data

Fire resistance (GWEPT)	850 °C
Heat resistance (Ball pressure)	70/125 °C
Free of halogens	Yes

## Regulations

CE marking	Yes
According to Regulations UNE/EN	UNE-20315-1-1:2017; UNE-20315-1-2:2017
In accordance with the Low Voltage Electrotechnical Regulations (REBT)	Yes

In accordance with the Regulation (EU) 2023/988 of the European Parliament and of the Council on general product safety

Yes

## Sustainability

According to European Directive 2011/65/UE (RoHS)	Yes
According to European Directive 2012/19/UE (RAEE2)	Yes
According to Regulations (RoHS)	UNE-EN IEC 63000:2022

## Logistics and packaging

Unit EAN code	8423220085367
EAN code container	8423220085084
EAN code packaging	18423220085081
Units packaging	10
Units carton	120
Pallet Units	4320
Packaging Measurements cm	26x14x10
Packaging Measures cm	44x27,5x40
Unit weight (g)	102
Container Weight (Kg)	1,1704
Packaging Weight (Kg)	14,7628
Tariff code	85366990

## Documentation and downloads



Commercial doc. (3.28MB)



Flush switches of Eruopa range (Solera)



Safety Information (0.38MB)



Assembly flush switches form Europa range (Solera)