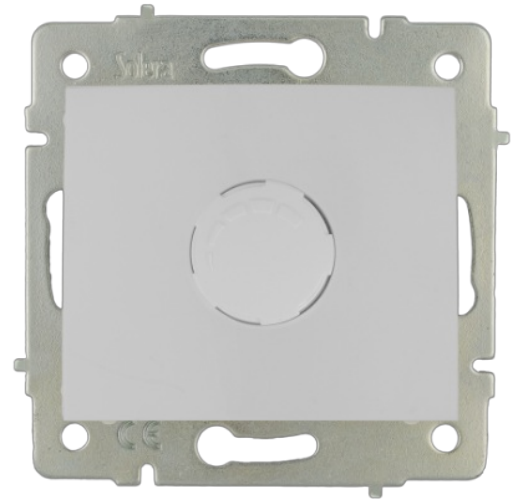


## LED dimmer. Flush.

LED dimmer. Flush.White colour. Without frame. Screw connection.



## Features

Common applications	Indoor domestic / tertiary environment (Interior of home, offices, shops, etc.)
Mechanism type	Regulator
Type of installation	Flush
Nominal voltage	250V~ (50/60 Hz)
Connection type	Screw connection
Flexible cable section	Up to 2.5 mm <sup>2</sup>
Rigid cable section	Up to 2.5 mm <sup>2</sup>
Type of operation	Rotary
Power	3-250 W
With fixing claws	Yes

## Technical data

Fire resistance (GWEPT)	850 °C
Heat resistance (Ball pressure)	70/125 °C
Free of halogens	Yes

## Regulations

CE marking	Yes
UK marking	Yes
CMim marking	Yes

According to Regulations UNE/EN	UNE-EN 60669-2-1:2005
In accordance with the Low Voltage Electrotechnical Regulations (REBT)	Yes
According to European Directive 2014/35 / EU. Low voltage directive	Yes

## Sustainability

According to European Directive 2011/65/UE (RoHS)	Yes
According to European Directive 2012/19/UE (RAEE2)	Yes
According to Regulations (RoHS)	UNE-EN IEC 63000:2022

## Logistics and packaging

Unit EAN code	8423220098824
EAN code container	8423220098831
EAN code packaging	18423220098838
Units packaging	10
Units carton	120
Pallet Units	4320
Packaging Measurements cm	28,3x15,5x7,8
Packaging Measures cm	48x31x32,5
Unit weight (g)	86
Container Weight (Kg)	1,0164
Packaging Weight (Kg)	12,9088
Tariff code	85366990

## Documentation and downloads



**Commercial doc. (3.28MB)**



**Flush switches of Eruopa range (Solera)**



**Safety Information (0.38MB)**



**Assembly flush switches form Europa range (Solera)**