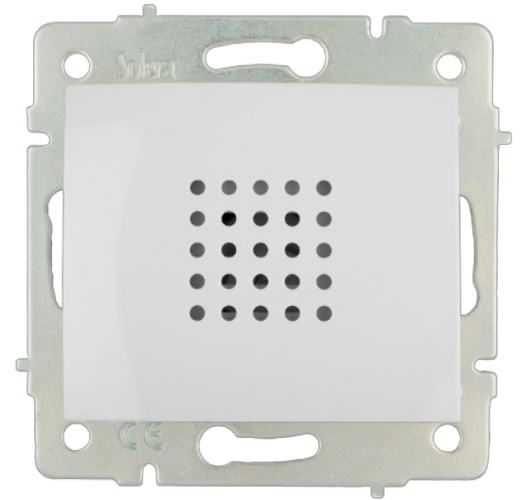


Buzzer, 230V~ 50Hz. 30W. Flush.

Buzzer, 230V~ 50Hz. 30W. Flush. White colour. Without frame. Screw connection.



Features

Common applications	Indoor domestic / tertiary environment (Interior of home, offices, shops, etc.)
Mechanism type	Buzzer
Type of installation	Flush
Nominal voltage	250V~ (50/60 Hz)
Connection type	Screw connection
Flexible cable section	Up to 2.5 mm ²
Rigid cable section	Up to 2.5 mm ²

Technical data

Fire resistance (GWEPT)	850 °C
Heat resistance (Ball pressure)	70/125 °C
Free of halogens	Yes

Regulations

CE marking	Yes
UK marking	Yes
CMim marking	Yes
According to Regulations IEC	UNE EN IEC 60947-1:2022
In accordance with the Low Voltage Electrotechnical Regulations (REBT)	Yes

According to European Directive 2014/35 / EU. Low voltage directive Yes

Sustainability

According to European Directive 2011/65/UE (RoHS) Yes

According to European Directive 2012/19/UE (RAEE2) Yes

According to Regulations (RoHS) UNE-EN IEC 63000:2022

Logistics and packaging

Unit EAN code 8423220208896

EAN code container 8423220208872

EAN code packaging 18423220208879

Units packaging 10

Units carton 120

Pallet Units 4320

Packaging Measurements cm 26x14x10

Packaging Measures cm 44x27,5x40

Unit weight (g) 102

Container Weight (Kg) 1,1704

Packaging Weight (Kg) 14,7628

Tariff code 85366990

Documentation and downloads



Commercial doc. (3.28MB)



Safety Information (0.38MB)



Flush switches of Eruopa range (Solera)



Assembly flush switches form Europa range (Solera)