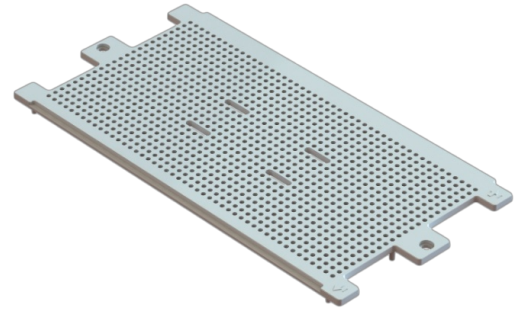


Interior assembly board

Interior assembly board For fixing accesories in the box. Multi-perforated 650°C
Common applications: Indoor domestic / tertiary environment (Interior of home, offices, shops, etc.)



Features

Use	Domestic / Tertiary
Location type	Inside

Technical data

Fire resistance (GWT)	650°C
Installation temperature	-5°C -> +60°C
UV resistance	Yes
Free of halogens	Yes

Regulations

CE marking	Yes
UK marking	Yes
CMim marking	Yes
According to Regulations UNE/EN	UNE-EN 60670-22:2007
According to REBT	Yes
According to European Directive 2014/35 / EU. Low voltage directive	Yes

Sustainability

According to European Directive 2011/65/UE (RoHS)	The Directive 2011/65/EU (RoHS II) is not applicable as it does not correspond to the definition of Electrical and Electronical Equipment (EEE) as per article 3.1
According to European Directive 2012/19/UE (RAEE2)	Not applicable because it does not meet the definition of Electrical and Electronic Equipment (EEE) as described in Article 3.1(a) of Directive 2012/19/EU (WEEE II).

Logistics and packaging

Unit EAN code	8423220073999
EAN code container	8423220073999
EAN code packaging	18423220073996
Units packaging	1
Units carton	125
Pallet Units	4375
Packaging Measures cm	59,5x20x37,5
Unit weight (gr)	110
Container Weight (Kg)	0,11
Packaging Weight (Kg)	14,33
Tariff code	85366990

Documentation and downloads



[Series replenishments \(0.07MB\)](#)



[Series replenishments \(0.08MB\)](#)