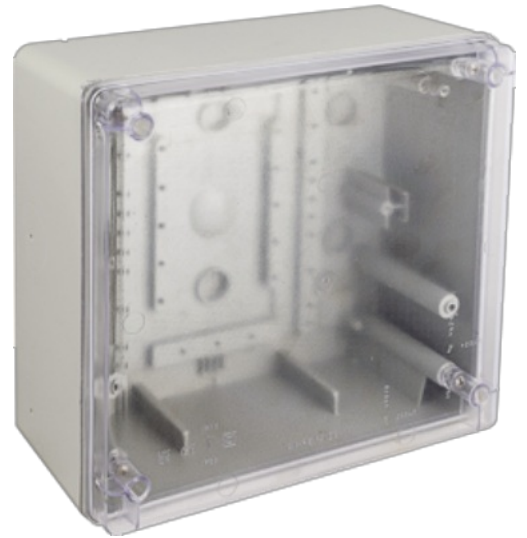


Watertight connection box 270x250x140 mm. Grey and transparent cover.

Waterproof industrial box. IP65. IK08. External dimensions 270 x 250 x 140 mm. Grey and transparent cover. Smooth side dotted . Stainless steel ultra fast closing screws.



Features

Installation method	Surface
Use	Industrial
Location type	Exterior and interior
Dimensions outside (mm) (width x height x depth)	270x250x140
Case material	Insulation
Case color	Grey (RAL7035)
Cap color	Transparent
Battens included	No
Fixation System (For surface)	Ref.KIT1300SOP (not included). For all INDUBOX except for Ref. 1303 and 1304
Sealable	Yes
Lid closure system	Ultra-fast metal screw
Possibility of mounting strips	Yes (not included)
Possibility of putting lock	Not
Possibility of mounting DIN rail	Yes (not included)
Valid for photovoltaic installations	Yes
Common applications	Industrial environments (factories, warehouses, etc.)

Technical data

Protection Degree (IK)	IK08
------------------------	------

Insulation class	Class II
Fire resistance (GWEPT)	650 °C
Heat resistance (Ball pressure)	70 °C
UV resistance	Yes
Free of halogens	Yes
Suitable for saline environments	Yes

Regulations

CE marking	Yes
UK marking	Yes
CMim marking	Yes
According to Regulations UNE/EN	UNE-EN 60670-1:2022. UNE-EN 60670-22:2007.
In accordance with the Low Voltage Electrotechnical Regulations (REBT)	Yes
According to European Directive 2014/35 / EU. Low voltage directive	Yes

Sustainability

According to European Directive 2011/65/UE (RoHS)	The Directive 2011/65/EU (RoHS II) is not applicable as it does not correspond to the definition of Electrical and Electronical Equipment (EEE) as per article 3.1
According to European Directive 2012/19/UE (RAEE2)	Not applicable because it does not meet the definition of Electrical and Electronic Equipment (EEE) as described in Article 3.1(a) of Directive 2012/19/EU (WEEE II).

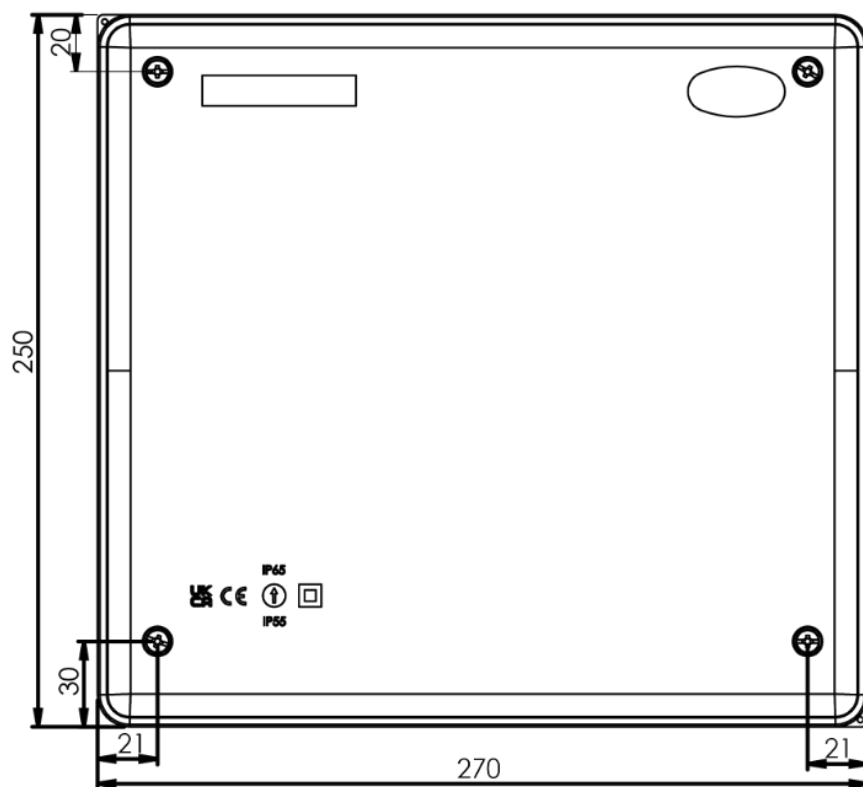
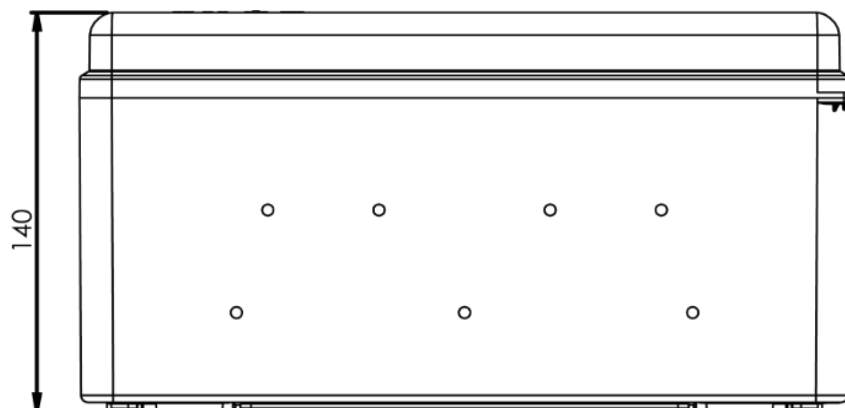
Logistics and packaging

Unit EAN code	8423220264403
EAN code container	8423220264403
Units packaging	1
Units carton	12
Pallet Units	144
Packaging Measures cm	59,5x42,5x51
Unit weight (g)	1030
Container Weight (Kg)	1,03

Packaging Weight (Kg) 13,284

Tariff code 85381000

Sketch



Documentation and downloads



Assembly instructions (1.16MB)



Safety Information (0.38MB)



Series replenishments (0.05MB)



Industrial cabinets IP65, IK08 (Solera) (Ed. 2024)