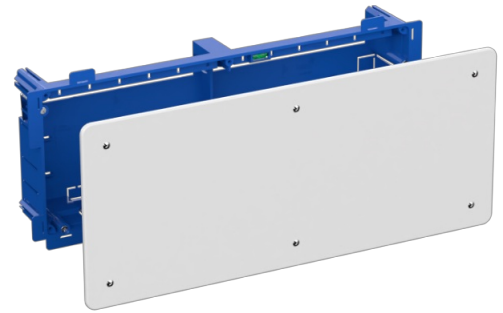


Flush connection box in hollow partition. 390 x 150 x 60 mm.

Flush connection box in hollow partition. 390 x 150 x 60 mm. Cover with screws.
Fixing system by claws



Features

Installation method	For hollow wall.
Use	Domestic / Tertiary
Location type	Inside
Dimensions outside (mm) (width x height x depth)	390x150x60
Dimensions inside (mm) (Width x Height x Depth)	382x142x60
Dimensions gap (mm) (Width x Height x Depth)	388x148x62
Case material	Insulation
Case color	Blue
Cap color	White
Ticket type	Unfathomable
Linkable	Vertically and horizontally
Lid closure system	Metal screw
Possibility of mounting DIN rail	Yes (not included)
Fixing system to the hollow partition.	Metal claw
With grommets at the bottom to fix the tubes or cables with cable ties, quantity	Yes
With recessed hole marking system	Yes
Common applications	Indoor domestic / tertiary environment (Interior of home, offices, shops, etc.)

Technical data

Fire resistance (GWEPT)	850 °C
-------------------------	--------

Heat resistance (Ball pressure)	70 °C
Ambient operating temperature	-5 °C ; +60 °C
Work stress	400 Vac
Free of halogens	Yes

Regulations

CE marking	Yes
UK marking	Yes
CMim marking	Yes
According to Regulations UNE/EN	UNE-EN 60670-1:2022 UNE- EN 60670-22:2007
In accordance with the Low Voltage Electrotechnical Regulations (REBT)	Yes
According to European Directive 2014/35 / EU. Low voltage directive	Yes

Sustainability

According to European Directive 2011/65/EU (RoHS)	The Directive 2011/65/EU (RoHS II) is not applicable as it does not correspond to the definition of Electrical and Electronical Equipment (EEE) as per article 3.1
According to European Directive 2012/19/EU (RAEE2)	Not applicable because it does not meet the definition of Electrical and Electronic Equipment (EEE) as described in Article 3.1(a) of Directive 2012/19/EU (WEEE II).

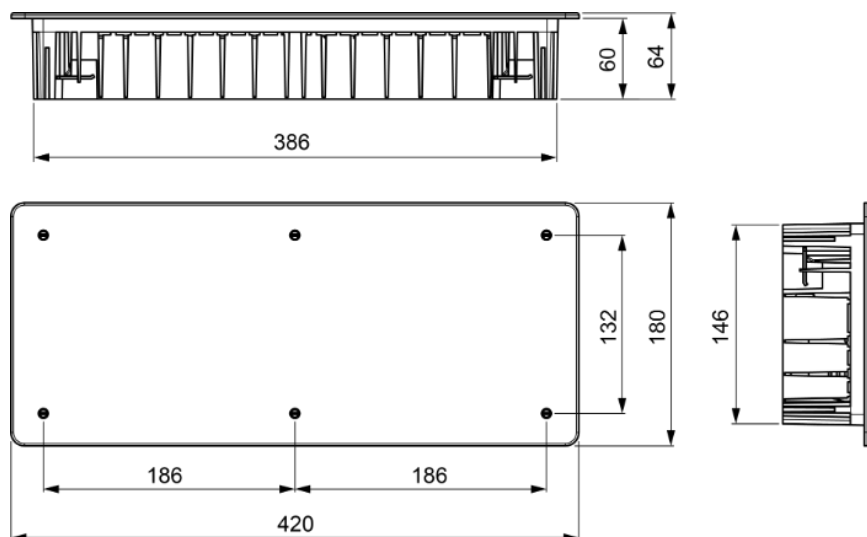
Logistics and packaging

Unit EAN code	8423220225329
EAN code container	8423220225329
EAN code packaging	18423220225326
Units packaging	1
Units carton	22
Pallet Units	330
Packaging Measures cm	59,5x39,5x59,5
Unit weight (g)	538,8
Container Weight (Kg)	0,5418
Packaging Weight (Kg)	13,0496

Tariff code

39259010

Sketch



Documentation and downloads



Commercial doc. (3.42MB)



Safety Information (0.38MB)



Mechanism boxes for dry wall, Blue range (Solera)