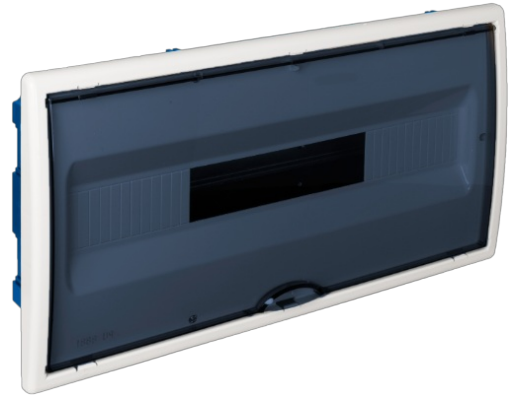


## Flush distribution box in hollow walls, 22 modules.

Flush distribution box in hollow walls with 22 modules. Fixing system using metal claws Ref. G-MP28. White frame and smoked door. Flush dimensions 450 x 222 x 72 mm.



## Features

Installation method	For hollow wall.
Use	Domestic / Tertiary
Location type	Inside
No. Modules (18 mm)	22
Modules per row	22
Metallic DIN profile	Yes
Dimensions gap (mm) (Width x Height x Depth)	450x222x72
Dimensions (mm)	See sketch
Case material	Insulation
Frame and door material	Insulation
Case color	Blue
Door color	Fume
Door opening	Vertical
Battens included	No
Ticket type	Unfathomable
Linkable	Vertically and horizontally
Lid closure system	Metal screw
Door closing system	Handle
Reversible door	Yes
Possibility of mounting strips	Yes (not included)
Possibility of putting lock	Yes (not included)
Possibility of mounting DIN rail	Yes (included)

Fixing system to the hollow partition.	Metal claw
Common applications	Indoor domestic / tertiary environment (Interior of home, offices, shops, etc.)
Additional dimensions (mm)	See sketch

## Technical data

Protection Degree (IK)	IK08
Impact shock resistance	Medium
Insulation class	Class II
Fire resistance (GWEPT)	850 °C
Heat resistance (Ball pressure)	70 °C
Ambient operating temperature	-5 °C ; +60 °C
Work stress	<1000 Vac ; 1500 Vdc
Free of halogens	Yes

## Regulations

CE marking	Yes
UK marking	Yes
CMim marking	Yes
According to Regulations UNE/EN	UNE-EN 62208:2012
In accordance with the Low Voltage Electrotechnical Regulations (REBT)	Yes
According to European Directive 2014/35 / EU. Low voltage directive	Yes

## Sustainability

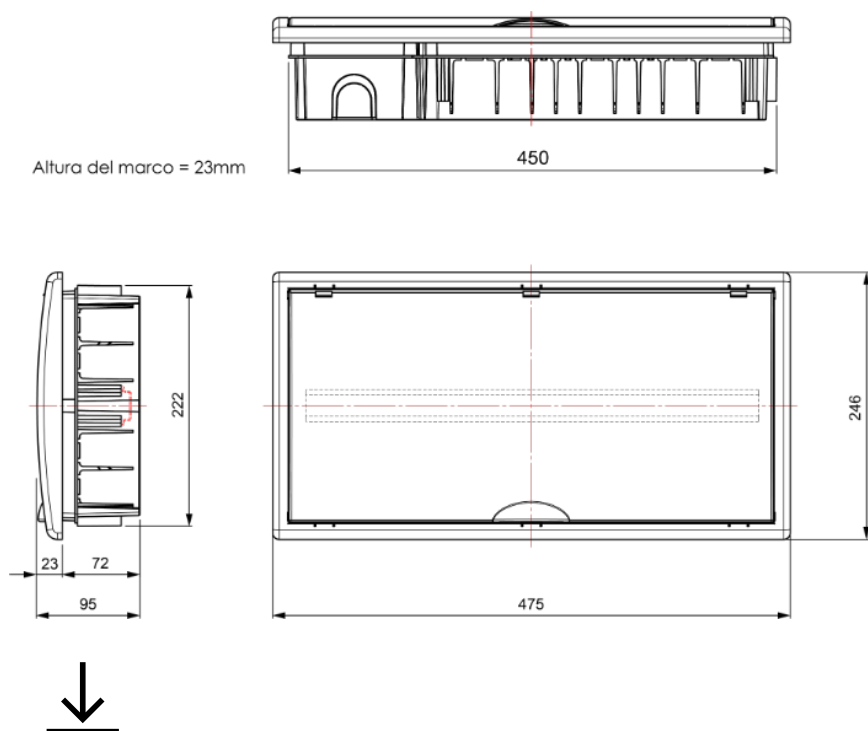
According to European Directive 2011/65/UE (RoHS)	The Directive 2011/65/EU (RoHS II) is not applicable as it does not correspond to the definition of Electrical and Electronical Equipment (EEE) as per article 3.1
According to European Directive 2012/19/UE (RAEE2)	Not applicable because it does not meet the definition of Electrical and Electronic Equipment (EEE) as described in Article 3.1(a) of Directive 2012/19/EU (WEEE II).

## Logistics and packaging

Unit EAN code	8423220092808
---------------	---------------

EAN code container	8423220092808
EAN code packaging	18423220092805
Units packaging	1
Units carton	10
Pallet Units	150
Packaging Measures cm	59,5x39,5x59,5
Packaging Weight (Kg)	1,13
Tariff code	39259010

## Sketch



## Documentation and downloads

- Commercial doc. (3.42MB)
- Safety Information (0.38MB)
- Commercial doc. (0.34MB)
- Distribution boards for Dry Wall (blue range)