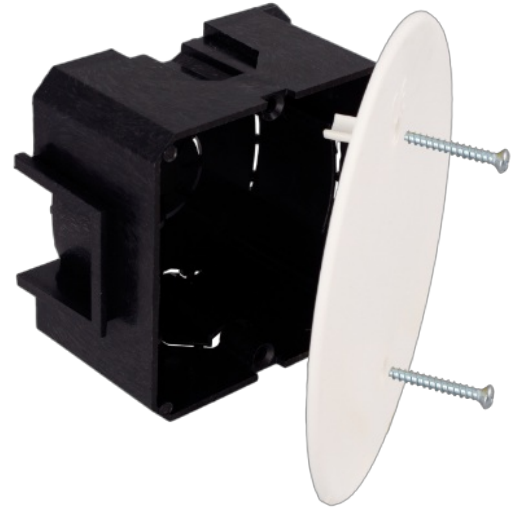


Flush connection box. 67 x 67 x 42 mm. Cover with screws.

Flush connection box. 67 x 67 x 42 mm. Cover with screws. Depth 42 mm. 5 inputs for tube Ø 25 mm.

Common applications: Indoor domestic / tertiary environment (Interior of home, offices, shops, etc.)



Features

Enclosure type	Connection and derivation
Installation method	Flush in work
Use	Domestic / Tertiary
Location type	Inside
Dimensions inside (mm) (Width x Height x Depth)	67x67x42
Case material	Insulation
Case color	Black
Cap color	White
No. of inlets and size (mm)	5xØ 25
Lid closure system	Metal screw

Technical data

Impact shock resistance	Medium
Insulation class	Class II
Fire resistance (GWT)	650°C
Heat resistance (Ball pressure)	70°C
Work stress	400 Vca
Free of halogens	Yes

Regulations

CE marking	Yes
UK marking	Yes
CMim marking	Yes
According to Regulations UNE/EN	UNE-EN 60670-1:2006 UNE-EN 60670-22:2007
According to REBT	Yes
According to European Directive 2014/35 / EU. Low voltage directive	Yes

Sustainability

According to European Directive 2011/65/UE (RoHS)	The Directive 2011/65/EU (RoHS II) is not applicable as it does not correspond to the definition of Electrical and Electronical Equipment (EEE) as per article 3.1
According to European Directive 2012/19/UE (RAEE2)	Not applicable because it does not meet the definition of Electrical and Electronic Equipment (EEE) as described in Article 3.1(a) of Directive 2012/19/EU (WEEE II).

Logistics and packaging

Unit EAN code	8423220057258
EAN code container	8423220057258
EAN code packaging	18423220057255
Units Container	1
Units Packaging	48
Pallet Units	2304
Packaging Measures cm	37,5x20x30
Unit weight (gr)	49
Container Weight (Kg)	0,05
Packaging Weight (Kg)	2,78
Tariff code	85371098

Documentation and downloads



[Assembly instructions \(0.41MB\)](#)