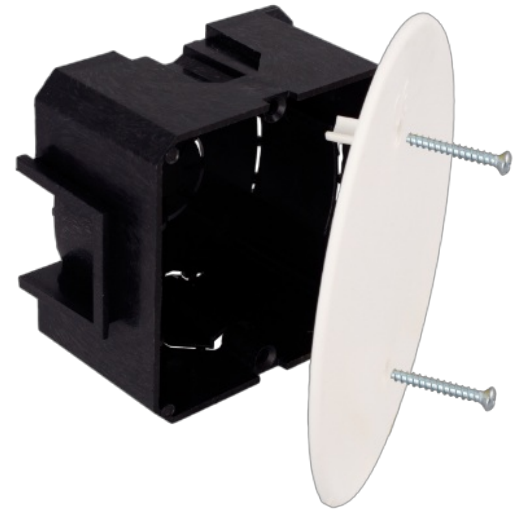


## Flush connection box. 67 x 67 x 42 mm. Cover with screws.

Flush connection box. 67 x 67 x 42 mm. Cover with screws. Depth 42 mm. 5 inputs for tube Ø 25 mm.



### Features

Installation method	Flush in work
Use	Domestic / Tertiary
Location type	Inside
Dimensions inside (mm) (Width x Height x Depth)	67x67x42
Case material	Insulation
Case color	Black
Cap color	White
No. of inlets and size (mm)	5xØ 25
Lid closure system	Metal screw
Common applications	Indoor domestic / tertiary environment (Interior of home, offices, shops, etc.)

### Technical data

Impact shock resistance	Medium
Insulation class	Class II
Fire resistance (GWEPT)	650 °C
Heat resistance (Ball pressure)	70 °C
Work stress	400 Vac
Free of halogens	Yes

## Regulations

CE marking	Yes
UK marking	Yes
CMim marking	Yes
According to Regulations UNE/EN	UNE-EN 60670-1:2022 UNE- EN 60670-22:2007
In accordance with the Low Voltage Electrotechnical Regulations (REBT)	Yes
According to European Directive 2014/35 / EU. Low voltage directive	Yes

## Sustainability

According to European Directive 2011/65/UE (RoHS)	The Directive 2011/65/EU (RoHS II) is not applicable as it does not correspond to the definition of Electrical and Electronical Equipment (EEE) as per article 3.1
According to European Directive 2012/19/UE (RAEE2)	Not applicable because it does not meet the definition of Electrical and Electronic Equipment (EEE) as described in Article 3.1(a) of Directive 2012/19/EU (WEEE II).

## Logistics and packaging

Unit EAN code	8423220057258
EAN code container	8423220057258
EAN code packaging	18423220057255
Units packaging	1
Units carton	48
Pallet Units	2304
Packaging Measures cm	37,5x30x20
Unit weight (g)	49
Container Weight (Kg)	0,051
Packaging Weight (Kg)	2,78
Tariff code	85371098

## Documentation and downloads



Assembly instructions (0.17MB)



Safety Information (0.38MB)

