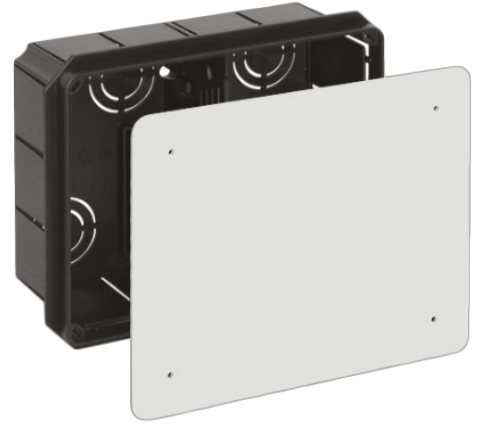


## Flush connection box. 200 x 160 x 70 mm Cover with screws.

Flush connection box. 200 x 160 mm Cover with screws. Depth 70 mm. 18 inputs for Ø 40 mm tube. One partition wall.



### Features

Installation method	Flush in work
Use	Domestic / Tertiary
Location type	Inside
Dimensions gap (mm) (Width x Height x Depth)	200x160x70
Case material	Insulation
Case color	Black
Cap color	White
No. of inlets and size (mm)	18xØ 40
Lid closure system	Metal screw
Possibility of mounting DIN rail	Yes (not included)
Common applications	Indoor domestic / tertiary environment (Interior of home, offices, shops, etc.)

### Technical data

Impact shock resistance	Medium
Insulation class	Class II
Fire resistance (GWEPT)	650 °C
Heat resistance (Ball pressure)	70 °C
Work stress	400 Vac
Free of halogens	Yes

## Regulations

CE marking	Yes
UK marking	Yes
CMim marking	Yes
According to Regulations UNE/EN	UNE-EN 60670-1:2022 UNE- EN 60670-22:2007
In accordance with the Low Voltage Electrotechnical Regulations (REBT)	Yes
According to European Directive 2014/35 / EU. Low voltage directive	Yes

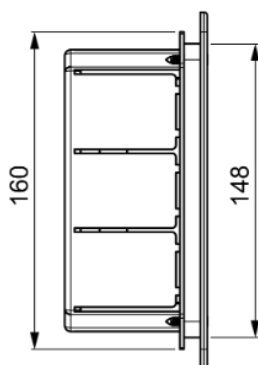
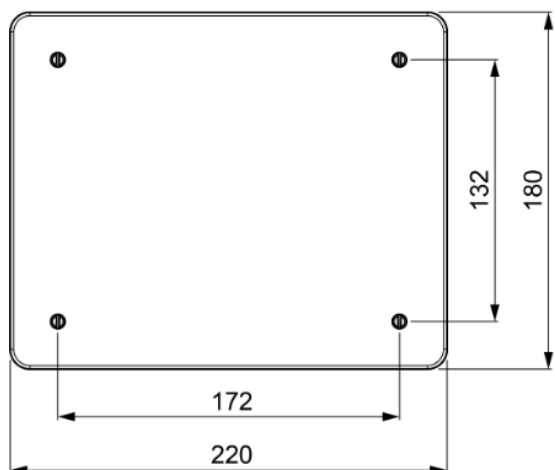
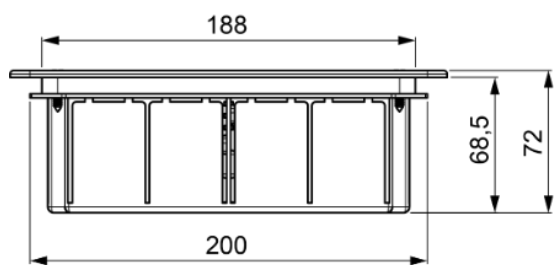
## Sustainability

According to European Directive 2011/65/UE (RoHS)	The Directive 2011/65/EU (RoHS II) is not applicable as it does not correspond to the definition of Electrical and Electronical Equipment (EEE) as per article 3.1
According to European Directive 2012/19/UE (RAEE2)	Not applicable because it does not meet the definition of Electrical and Electronic Equipment (EEE) as described in Article 3.1(a) of Directive 2012/19/EU (WEEE II).

## Logistics and packaging

Unit EAN code	8423220011977
EAN code container	8423220011977
EAN code packaging	18423220011974
Units packaging	1
Units carton	40
Pallet Units	600
Packaging Measures cm	59,8x37,5x59
Unit weight (g)	282
Container Weight (Kg)	0,287
Packaging Weight (Kg)	12,58
Tariff code	85371098

## Sketch



## Documentation and downloads



Assembly instructions (0.17MB)



Safety Information (0.38MB)