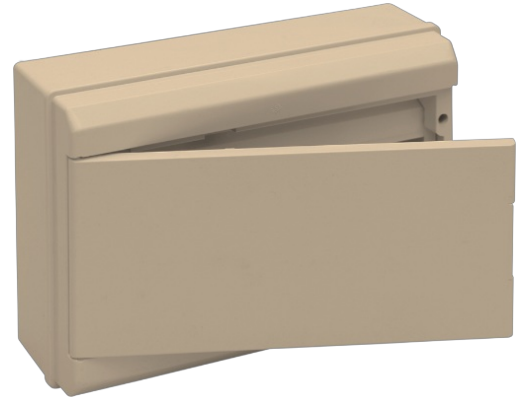


Surface distribution board, 14 modules.

Surface distribution board, 14 modules. Ivory colour. External dimensions 290 x 200 x 95 mm.



Features

Installation method	Surface
Use	Domestic / Tertiary
Location type	Inside
No. Modules (18 mm)	14
Modules per row	14
Metallic DIN profile	Yes
Dimensions outside (mm) (width x height x depth)	290x200x95 mm
Dimensions (mm)	See sketch
Case material	Insulation
Case color	Ivory
Door color	Ivory
Door opening	Horizontal
Ticket type	Smooth sides (machining inlets)
Fixation System (For surface)	Inside
Lid closure system	Metal screw
Door closing system	Handle
Possibility of putting lock	Yes (not included)
Possibility of mounting DIN rail	Yes (included)
Common applications	Indoor domestic / tertiary environment (Interior of home, offices, shops, etc.)
Additional dimensions (mm)	See sketch

Technical data

Protection Degree (IK)	IK07
Impact shock resistance	Medium
Insulation class	Class II
Fire resistance (GWEPT)	650 °C
Heat resistance (Ball pressure)	70 °C
Free of halogens	Yes

Regulations

CE marking	Yes
UK marking	Yes
CMim marking	Yes
According to Regulations UNE/EN	UNE-EN 62208:2012
In accordance with the Low Voltage Electrotechnical Regulations (REBT)	Yes
According to European Directive 2014/35 / EU. Low voltage directive	Yes

Sustainability

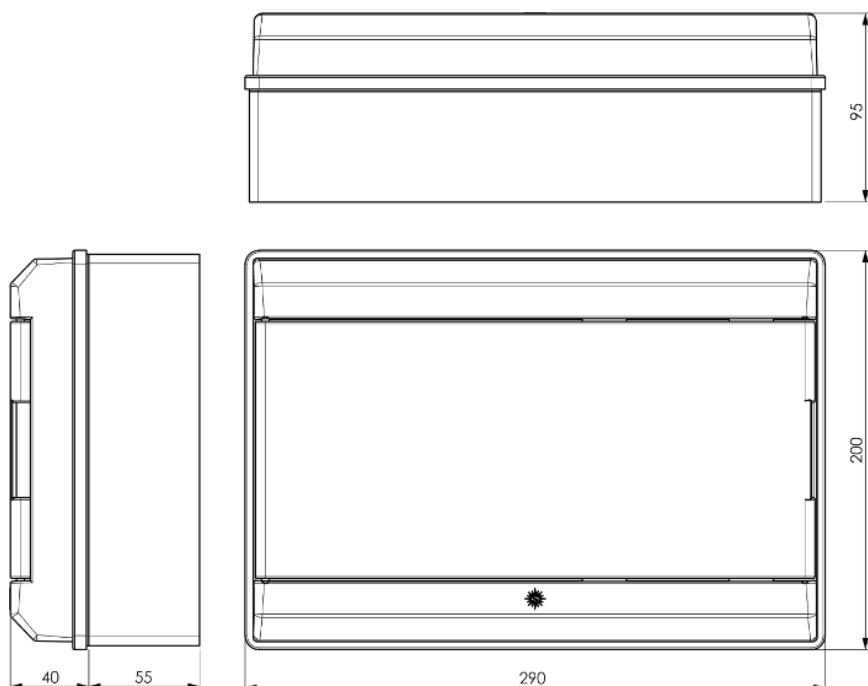
According to European Directive 2011/65/EU (RoHS)	The Directive 2011/65/EU (RoHS II) is not applicable as it does not correspond to the definition of Electrical and Electronic Equipment (EEE) as per article 3.1
According to European Directive 2012/19/EU (RAEE2)	Not applicable because it does not meet the definition of Electrical and Electronic Equipment (EEE) as described in Article 3.1(a) of Directive 2012/19/EU (WEEE II).

Logistics and packaging

Unit EAN code	8423220049208
EAN code container	8423220049208
EAN code packaging	18423220049205
Units packaging	1
Units carton	24
Pallet Units	360
Packaging Measures cm	59,5x39,5x59,5
Unit weight (g)	776

Container Weight (Kg)	0,781
Packaging Weight (Kg)	19,874
Tariff code	85371098

Sketch



Documentation and downloads



Assembly instructions (0.72MB)



Safety Information (0.38MB)



Series replenishments (0.06MB)