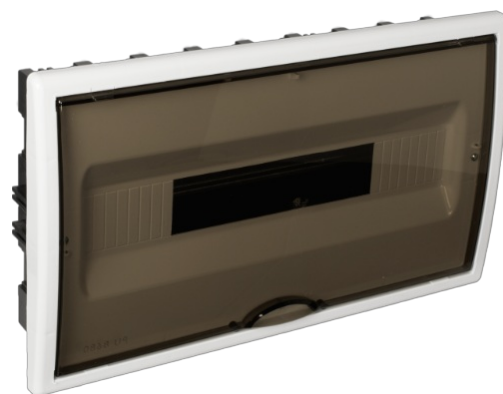


Flush distribution board, 18 modules. Fume door.

Flush distribution board, 18 modules. Fume door. White frame. Flush dimensions 386 x 225 x 72 mm.

Common applications: Indoor domestic / tertiary environment (Interior of home, offices, shops, etc.)



Features

Enclosure type	Distribution
Installation method	Flush in work
Use	Domestic / Tertiary
Location type	Inside
No. Modules (18 mm)	18
Modules per row	18
Metallic DIN profile	Yes
Dimensions outside (mm) (width x height x depth)	409x247
Dimensions inside (mm) (Width x Height x Depth)	386x225x72
Case material	Insulation
Frame and door material	Insulation
Case color	Black
Cap color	White
Door color	Fumé
Door opening	Vertical
Battens included	No
Ticket type	Unfathomable
Fixation System (For surface)	Inside
Sealable	Not
Lid closure system	Metal screw

Door closing system	A Pressure
Reversible door	Yes
Possibility of mounting strips	Yes (not included)
Possibility of mounting with key / padlock	Key
Separate covers or doors on the boxes	Yes
Possibility of mounting DIN rail	Yes (included)

Technical data

Protection Degree (IP)	IP40
Protection Degree (IK)	IK08
Insulation class	Class II
Fire resistance (GWT)	650°C
Heat resistance (Ball pressure)	70°C
Installation temperature	-5°C -> +60°C
Ambient operating temperature	-5°C ; +60°C
Work stress	400 Vca
Free of halogens	Yes

Regulations

CE marking	Yes
UK marking	Yes
CMim marking	Yes
According to Regulations UNE/EN	UNE-EN 62208:2012
According to REBT	Yes
According to European Directive 2014/35 / EU. Low voltage directive	Yes

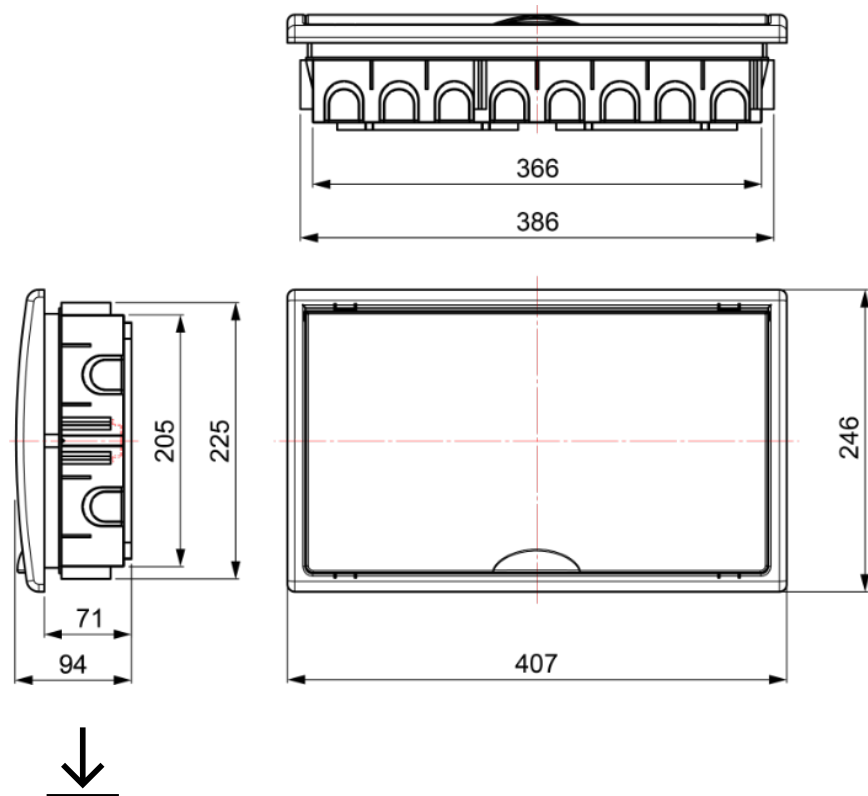
Sustainability

According to European Directive 2011/65/UE (RoHS)	The Directive 2011/65/EU (RoHS II) is not applicable as it does not correspond to the definition of Electrical and Electronical Equipment (EEE) as per article 3.1
According to European Directive 2012/19/UE (RAEE2)	Not applicable because it does not meet the definition of Electrical and Electronic Equipment (EEE) as described in Article 3.1(a) of Directive 2012/19/EU (WEEE II).

Logistics and packaging

Unit EAN code	8423220010024
EAN code container	8423220010024
EAN code packaging	18423220010021
Units Container	1
Units Packaging	12
Pallet Units	144
Packaging Measurements cm	10x41x24,5
Packaging Measures cm	59,5x51x42,5
Unit weight (gr)	1058
Container Weight (Kg)	1,22
Packaging Weight (Kg)	15,87
Tariff code	85371098

Sketch



Documentation and downloads



[Assembly instructions \(1.12MB\)](#)



[Table of compatibilities: box, frame and door
\(0.06MB\)](#)



[Distribution boards Arelos range \(Solera\)](#)



[Commercial doc. \(20.32MB\)](#)



[Link options for enclosures \(0.13MB\)](#)



[Dimensions table \(0.15MB\)](#)



[Montaje de las cajas de distribución de la serie Arelos
\(Solera\)](#)