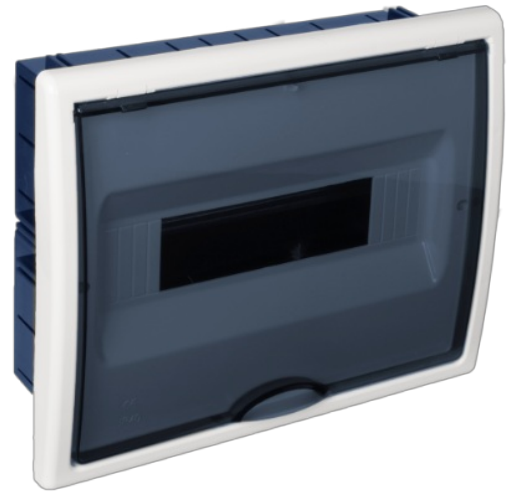


## Flush distribution board, 12 modules. For hollow wall. Fume door.

Flush-mounted board for hollow walls with 12 modules. White frame and fume-coloured door. Black multi-perforated support. Flush size: 277 x 220 x 72 mm. For drywalls.



### Features

Installation method	For hollow wall.
Use	Domestic / Tertiary
Location type	Inside
No. Modules (18 mm)	12
Modules per row	12
Metallic DIN profile	Yes
Dimensions gap (mm) (Width x Height x Depth)	277x220x72
Dimensions (mm)	See sketch
Case material	Insulation
Frame and door material	Insulation
Case color	Blue
Cap color	White
Door color	Fume
Door opening	Vertical
Battens included	No
Ticket type	Unfathomable
Fixation System (For surface)	Inside
Sealable	Not
Linkable	Vertically and horizontally
Lid closure system	Metal screw

Door closing system	A Pressure
Reversible door	Yes
Possibility of mounting strips	Yes (not included)
Possibility of putting lock	Yes (not included)
Separate covers or doors on the boxes	Yes
Possibility of mounting DIN rail	Yes (included)
Fixing system to the hollow partition.	Multi-perforated support for hollow wall black colour.
Common applications	Indoor domestic / tertiary environment (Interior of home, offices, shops, etc.)
Additional dimensions (mm)	See sketch

## Technical data

Protection Degree (IK)	IK08
Insulation class	Class II
Fire resistance (GWEPT)	850 °C
Heat resistance (Ball pressure)	70 °C
Installation temperature	-5 °C -> +60 °C
Ambient operating temperature	-5 °C ; +60 °C
Work stress	400 Vac-1000 Vdc
Free of halogens	Yes

## Regulations

CE marking	Yes
UK marking	Yes
CMim marking	Yes
According to Regulations UNE/EN	UNE-EN 62208:2012
In accordance with the Low Voltage Electrotechnical Regulations (REBT)	Yes
According to European Directive 2014/35 / EU. Low voltage directive	Yes

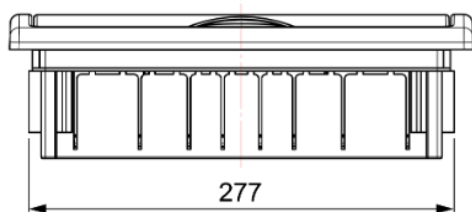
## Sustainability

According to European Directive 2011/65/UE (RoHS)	The Directive 2011/65/EU (RoHS II) is not applicable as it does not correspond to the definition of Electrical and Electronical Equipment (EEE) as per article 3.1
According to European Directive 2012/19/UE (RAEE2)	Not applicable because it does not meet the definition of Electrical and Electronic Equipment (EEE) as described in Article 3.1(a) of Directive 2012/19/EU (WEEE II).

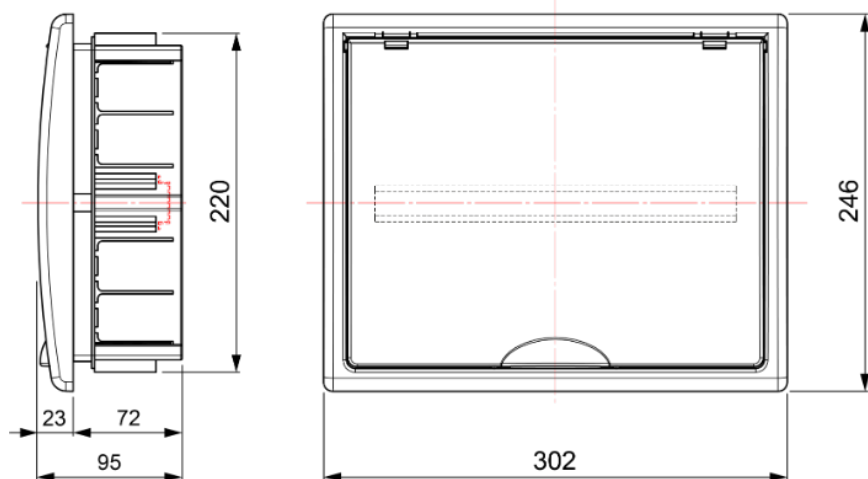
## Logistics and packaging

Unit EAN code	8423220260962
EAN code container	8423220260962
Units packaging	1
Units carton	10
Pallet Units	150
Packaging Measurements cm	11x25x35,1
Packaging Measures cm	57,8x38,5x46
Unit weight (g)	730
Container Weight (Kg)	0,8556
Packaging Weight (Kg)	9,343
Tariff code	39259010

## Sketch



Altura del marco = 23mm



## Documentation and downloads



Included accessories (0.14MB)



Safety Information (0.38MB)



Dimensions table (0.15MB)



Series replenishments (0.12MB)



Distribution boards Arelos range (Solera) 2020