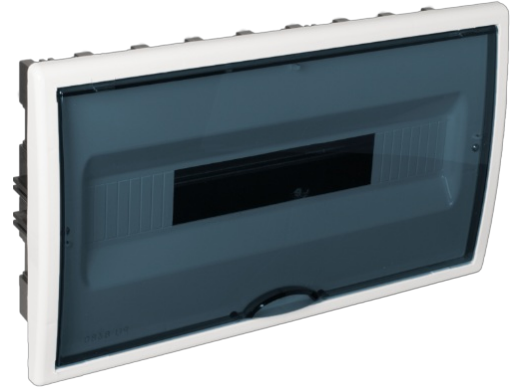


Flush distribution board, 18 modules. Smoked door.

Flush board with 18 modules, white frame and smoked door. Dimensions 386 x 225 x 72 mm. Elegant solution for flush-mounted installations.



Features

Installation method	Flush in work
Use	Domestic / Tertiary
Location type	Inside
No. Modules (18 mm)	18
Modules per row	18
Metallic DIN profile	Yes
Dimensions gap (mm) (Width x Height x Depth)	386 x 225 x 72 mm
Dimensions (mm)	See sketch
Case material	Insulation
Frame and door material	Insulation
Case color	Black
Cap color	White
Door color	Fume
Door opening	Vertical
Battens included	No
Ticket type	Unfathomable
Fixation System (For surface)	Inside
Sealable	Not
Linkable	Vertically and horizontally
Lid closure system	Metal screw
Door closing system	A Pressure

Reversible door	Yes
Possibility of mounting strips	Yes (not included)
Possibility of putting lock	Yes (not included)
Separate covers or doors on the boxes	Yes
Possibility of mounting DIN rail	Yes (included)
Common applications	Indoor domestic / tertiary environment (Interior of home, offices, shops, etc.)
Additional dimensions (mm)	See sketch

Technical data

Protection Degree (IK)	IK08
Insulation class	Class II
Fire resistance (GWEPT)	650 °C
Heat resistance (Ball pressure)	70 °C
Installation temperature	-5 °C -> +60 °C
Ambient operating temperature	-5 °C ; +60 °C
Work stress	400 Vac-1000 Vdc
Thermal power dissipated	27 W
Free of halogens	Yes

Regulations

CE marking	Yes
UK marking	Yes
CMim marking	Yes
According to Regulations UNE/EN	UNE-EN 62208:2012
In accordance with the Low Voltage Electrotechnical Regulations (REBT)	Yes
According to European Directive 2014/35 / EU. Low voltage directive	Yes

Sustainability

According to European Directive 2011/65/UE (RoHS)	The Directive 2011/65/EU (RoHS II) is not applicable as it does not correspond to the definition of Electrical and Electronical Equipment (EEE) as per article 3.1
---	--

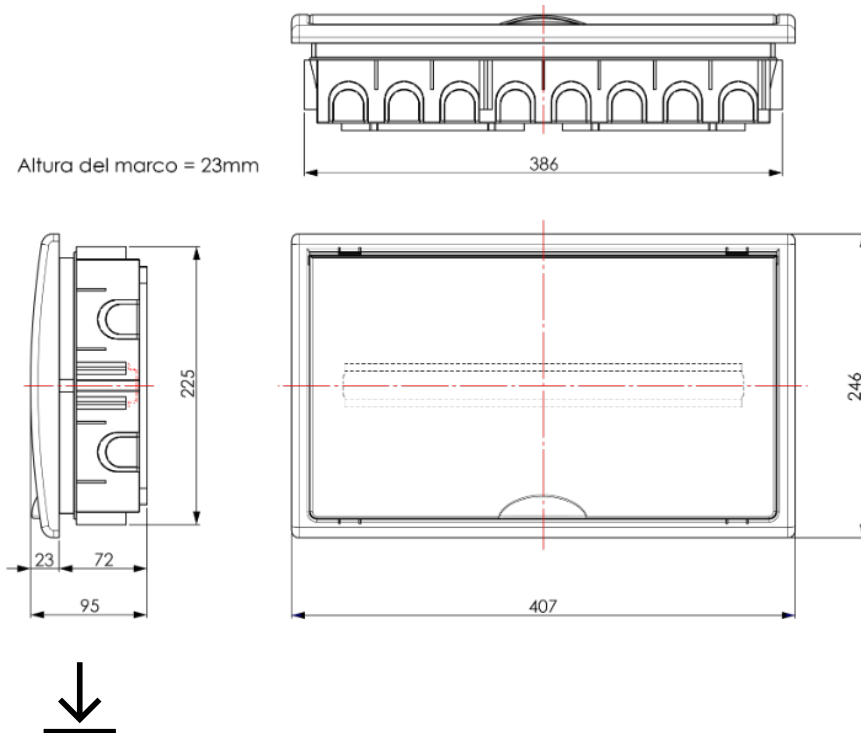
According to European Directive 2012/19/UE (RAEE2)

Not applicable because it does not meet the definition of Electrical and Electronic Equipment (EEE) as described in Article 3.1(a) of Directive 2012/19/EU (WEEE II).


Logistics and packaging

Unit EAN code	8423220010024
EAN code container	8423220010024
EAN code packaging	18423220010021
Units packaging	1
Units carton	12
Pallet Units	144
Packaging Measurements cm	10x24,5x41
Packaging Measures cm	59,5x42,5x51
Unit weight (g)	1119
Container Weight (Kg)	1,2607
Packaging Weight (Kg)	16,0524
Tariff code	85371098

Sketch



Documentation and downloads

- | | |
|---|--|
|  Assembly instructions (2.09MB) |  Included accessories (0.14MB) |
|  Safety Information (0.38MB) |  Dimensions table (0.15MB) |
|  Series replenishments (0.12MB) |  Distribution boards Arelos range (Solera) 2020 |