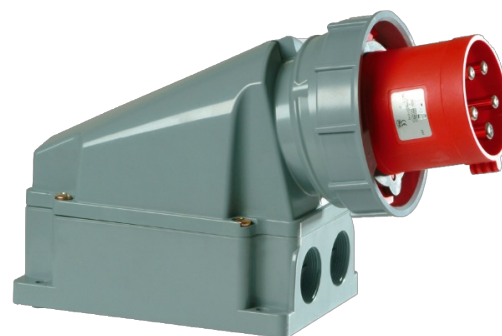


## Industrial surface plug 3P+N+E, 63A 400V~. IP67

Industrial surface plug 3P+N+E, 63A 400V~. IP67



### Features

Common applications	Industrial environments (factories, warehouses, etc.)
Type	Surface Flush plugs
No. of poles	3P + N + T
Type of terminal connection	Screw connection
Earth position	6h
Nominal current	63A
Nominal voltage	400V
Color	Red

### Technical data

Protection Degree (IK)	IK09
Impact shock resistance	Strong
Fire resistance (GWEPT)	850 °C
Heat resistance (Ball pressure)	125 °C
Ambient operating temperature	-5 °C ; +40 °C
Dimensional stability	-25 °C -> +80 °C
Free of halogens	Yes

### Regulations

CE marking	Yes
UK marking	Yes
CMim marking	Yes

According to Regulations UNE/EN	UNE-EN 60309-1:2023 UNE-EN 60309-2:2023
In accordance with the Low Voltage Electrotechnical Regulations (REBT)	Yes
According to European Directive 2014/35 / EU. Low voltage directive	Yes

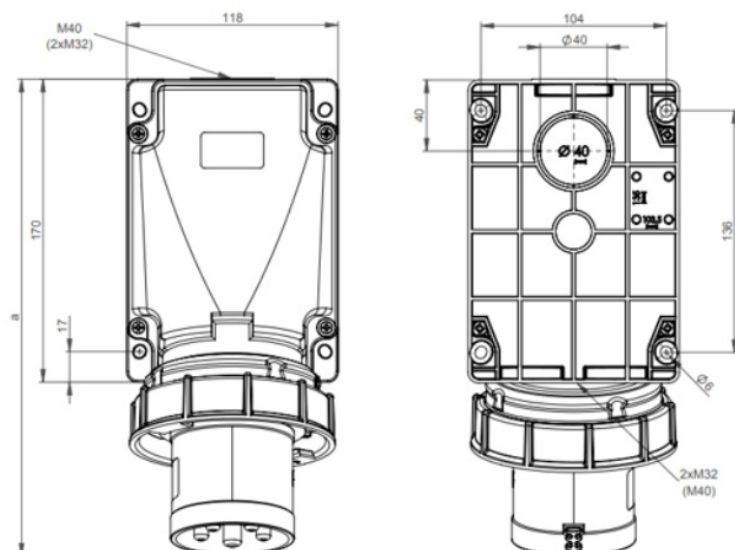
## Sustainability

According to European Directive 2011/65/UE (RoHS)	Yes
According to European Directive 2012/19/UE (RAEE2)	Yes
According to Regulations (RoHS)	UNE-EN IEC 63000:2022

## Logistics and packaging

Unit EAN code	8423220046481
EAN code container	8423220046481
EAN code packaging	18423220046488
Units packaging	1
Units carton	1
Pallet Units	99999
Packaging Measures cm	33x26x17
Packaging Weight (Kg)	0,9242
Tariff code	85366990

## Sketch



<b>Ampere</b>	<b>63</b>		
<b>Pole</b>	<b>3</b>	<b>4</b>	<b>5</b>
<b>a [mm]</b>	271	271	271
<b>b [mm]</b>	175	175	175



## Documentation and downloads



Safety Information (0.38MB)