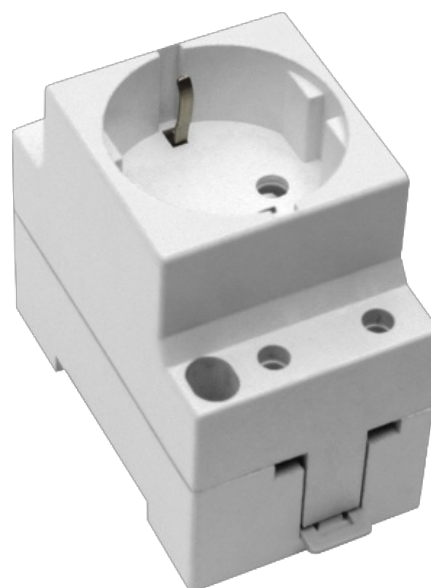


Socket for DIN rail 2P+E, 16A 250V~. White colour.

Socket for DIN rail 2P+E, 16A 250V~. White colour. Width 2.5 modules (45mm)



Features

Common applications	Indoor domestic / tertiary environment (Interior of home, offices, shops, etc.)
Material	Thermoplastic
Type	Modular socket-outlet for DIN rail
No. of poles	2P + T
Type of terminal connection	Screw connection
Nominal current	16A
Grounding	Side
Nominal current	16A
Nominal voltage	250V~
Color	White

Technical data

Fire resistance (GWEPT)	650/750 °C
Heat resistance (Ball pressure)	70/125 °C
Free of halogens	Yes

Regulations

CE marking	Yes
------------	-----

According to Regulations UNE/EN	UNE 20315-1-1:2017 UNE 20315-1-2:2017
In accordance with the Low Voltage Electrotechnical Regulations (REBT)	Yes
According to European Directive 2014/35 / EU. Low voltage directive	Not applicable

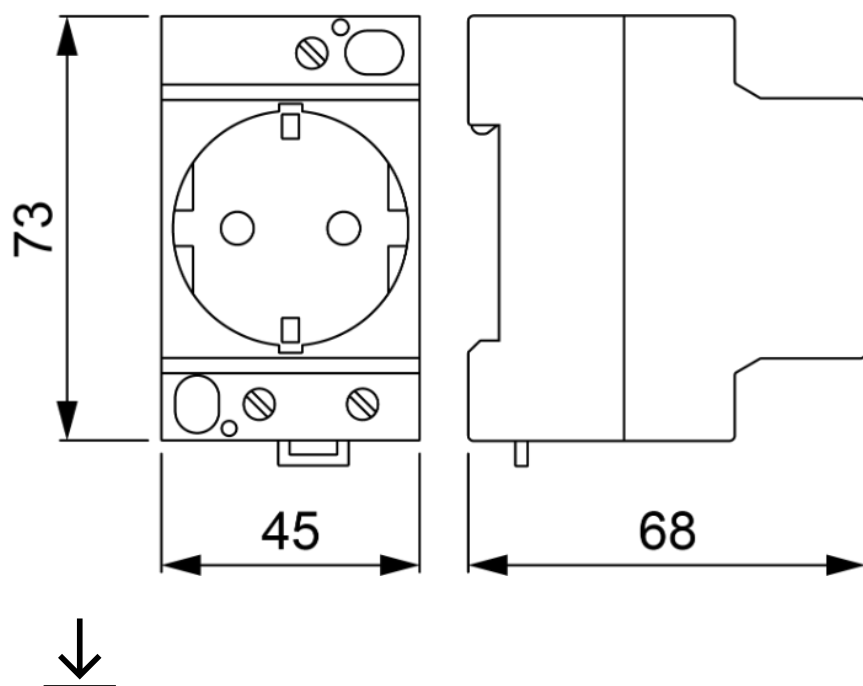
Sustainability

According to European Directive 2011/65/UE (RoHS)	Yes
According to European Directive 2012/19/UE (RAEE2)	Yes
According to Regulations (RoHS)	UNE-EN IEC 63000:2022

Logistics and packaging

Unit EAN code	8423220237759
EAN code container	8423220018419
EAN code packaging	18423220018416
Units packaging	8
Units carton	128
Pallet Units	4480
Packaging Measurements cm	14,5x8,8x19
Packaging Measures cm	59,5x37,5x20
Unit weight (g)	79,4
Container Weight (Kg)	0,6822
Packaging Weight (Kg)	11,4952
Tariff code	85366990

Sketch



Documentation and downloads



Safety Information (0.38MB)