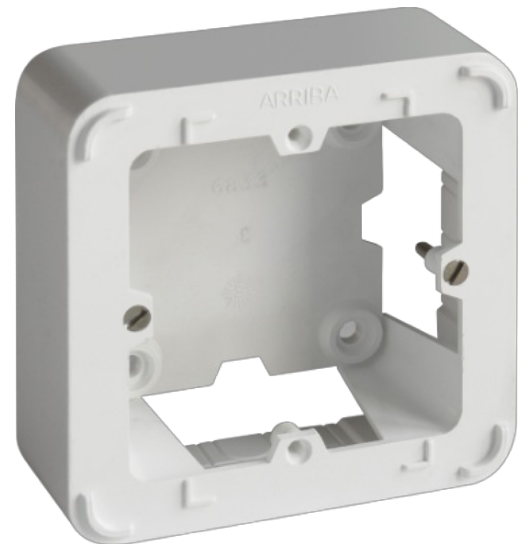


Surface box to mount ref. 6827.

Surface box to mount ref. 6827. Inputs for mini-trunking up to 16 x 40 mm.



Features

Installation method	Surface
Use	Domestic / Tertiary
Location type	Inside
No. Modules (18 mm)	1
Dimensions outside (mm) (width x height x depth)	85x85x35
Case material	Insulation
Case color	White
Fixation System (For surface)	Inside
Common applications	Indoor domestic / tertiary environment (Interior of home, offices, shops, etc.)

Technical data

Insulation class	Class II
Fire resistance (GWEPT)	850 °C
Free of halogens	Yes

Regulations

CE marking	Yes
CMim marking	Yes

According to Regulations UNE/EN	UNE-EN 60670-22:2007
In accordance with the Low Voltage Electrotechnical Regulations (REBT)	Yes
According to European Directive 2014/35 / EU. Low voltage directive	Yes

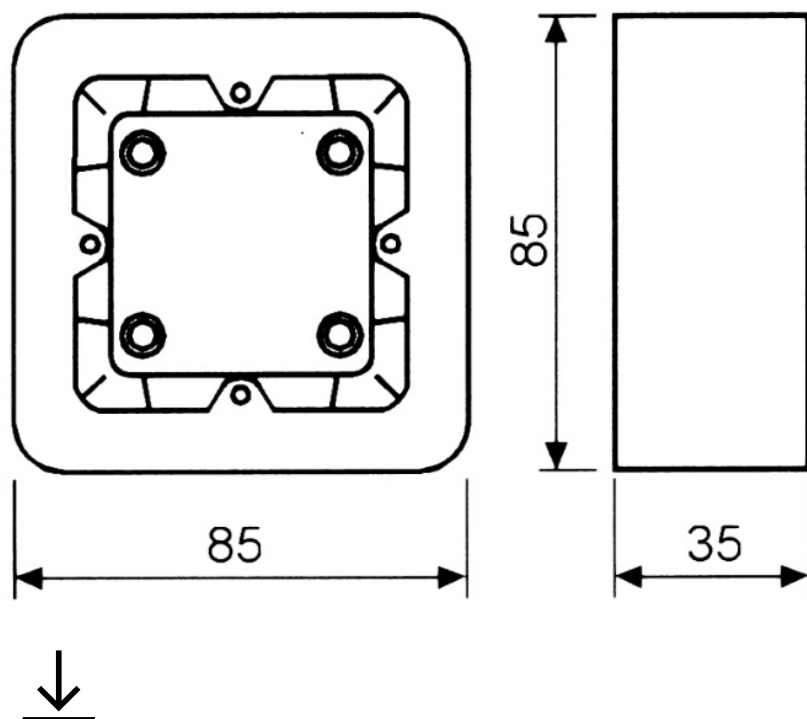
Sustainability

According to European Directive 2011/65/UE (RoHS)	The Directive 2011/65/EU (RoHS II) is not applicable as it does not correspond to the definition of Electrical and Electronical Equipment (EEE) as per article 3.1
According to European Directive 2012/19/UE (RAEE2)	Not applicable because it does not meet the definition of Electrical and Electronic Equipment (EEE) as described in Article 3.1(a) of Directive 2012/19/EU (WEEE II).

Logistics and packaging

Unit EAN code	8423220237292
EAN code container	8423220004160
EAN code packaging	18423220004167
Units packaging	10
Units carton	300
Pallet Units	4500
Packaging Measures cm	57,8x38,5x46
Unit weight (g)	40,6
Container Weight (Kg)	0,416
Packaging Weight (Kg)	13,45
Tariff code	85371098

Sketch



Documentation and downloads



Safety Information (0.38MB)