



<b>TEST REPORT</b>	
<b>EN 60998-2-1:2004 and IEC 60998-2-1:2002</b>	
<b>Connecting devices for low voltage circuits for household and similar purposes</b>	
<b>Part 2-1: Particular requirements for connecting devices as separate entities with screw-type clamping units</b>	
Report Reference No.....	: MI25-0127502-01
Tested by (name + signature) .....	: TESSE VITO ALBINO .....
Witnessed by (name + signature).....	: - .....
Supervised by (name + signature) ..	: - .....
Approved by (name + signature) .....	: PRIMICERIO ALESSANDRO .....
Date of issue .....	: 23/03/2026
Number of pages .....	: 12 (Test Report) + 1 (Annex)
<b>CB Testing laboratory name .....</b>	: IMQ S.p.A.
Address .....	: -
Testing location / procedure .....	: CBTL <input checked="" type="checkbox"/> TMP <input type="checkbox"/> WMT <input type="checkbox"/> SMT <input type="checkbox"/>
Testing location / address.....	: as above
<b>Applicant's name .....</b>	: PORTALAMPARAS Y ACCESORIOS SOLERA ,S.A.U
Address .....	: Pol.Ind.Fuente del Jarro. C/Villa de Madrid,53 – 46988 Paterna (Valencia) Espana
<b>Test specification:</b>	
Standard .....	: <input checked="" type="checkbox"/> IEC 60 998-2-1:2002 (see also IEC 60 998-1:2002) <input checked="" type="checkbox"/> EN 60 998-2-1:2004 (see also EN 60 998-1:2004)
Test procedure .....	: N/A
Non-standard test method .....	: N/A
<b>Test Report Form No. ....</b>	: IECEN60998_2_1A
TRF originator .....	: --
Master TRF .....	: 2004-07
This publication may be reproduced in whole or in part for non-commercial purposes as long as the IECEE is acknowledged as copyright owner and source of the material. IECEE takes no responsibility for and will not assume liability for damages resulting from the reader's interpretation of the reproduced material due to its placement and context.	
Procedure deviation .....	: -
Type of test object.....	: Connecting devices
Trademark .....	: SOLERA (logo)
Model/type reference .....	: See page 12/12
Manufacturer .....	: PORTALAMPARAS Y ACCESORIOS SOLERA ,S.A.U Pol.Ind.Fuente del Jarro. C/Villa de Madrid,53 – 46988 Paterna (Valencia) Espana
Rating .....	: 16 mm <sup>2</sup> - 6 mm <sup>2</sup> ; 400V ; 80 A.

Test item particulars:

Number of terminals..... :  single     multiway

Function..... :  junction     tapping     junction and tapping

Protection against electric shock..... :  with     without

Means of fixing..... :  with     without

IP number..... : IP00

Ambient temperature..... :  without T marking     with T marking (°C):

Type of terminals, screw-type..... :  pillar     saddle  
 screw     mantle  
 stud    unprepared

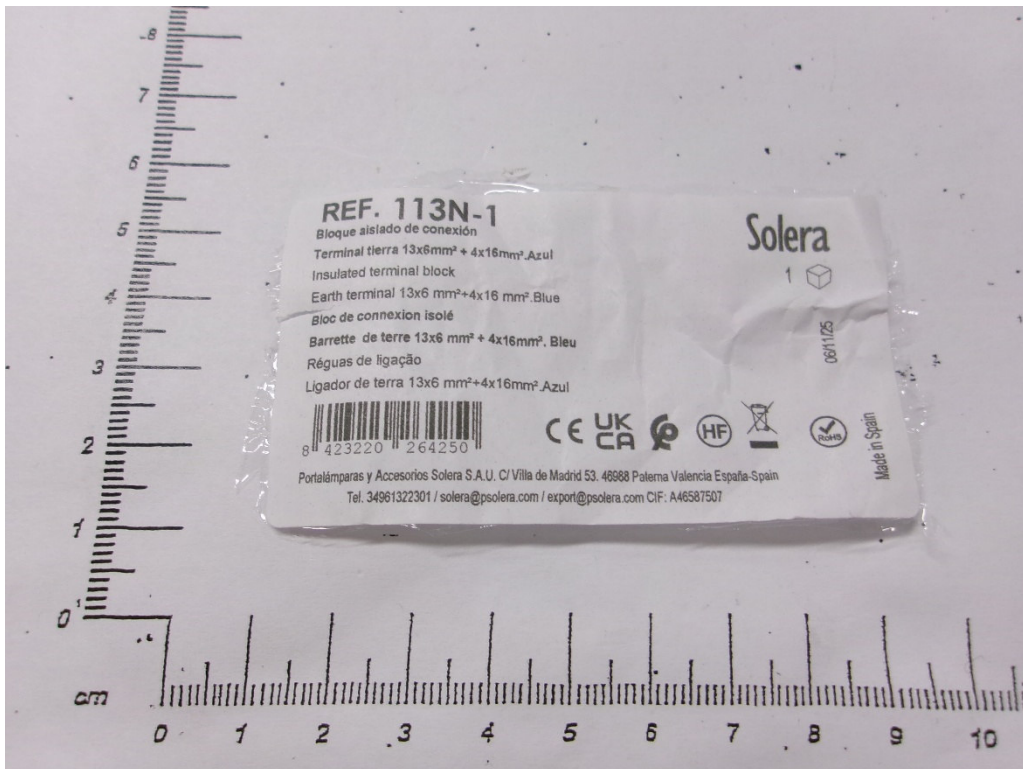
Rated connecting capacity (mm<sup>2</sup>)..... :  0,5 mm<sup>2</sup>     0,75 mm<sup>2</sup>     1 mm<sup>2</sup>     1,5 mm<sup>2</sup>  
 2,5 mm<sup>2</sup>     4 mm<sup>2</sup>     6 mm<sup>2</sup>     10 mm<sup>2</sup>  
 16 mm<sup>2</sup>     25 mm<sup>2</sup>     35 mm<sup>2</sup>

Type of connector..... :  rigid     flexible

Rated voltage (V a.c. / V d.c.)..... : 400 V     AC     DC

Copy of marking plate and summary of test results (information/comments):

On the label ( for example ):



Summary of testing:

This test report is composed of:

- Test report based on IEC 60 998-2 1:2002 : 12 pages
- Annex 1 Photographic documentation: 4 page

Test item particulars:

- test case does not apply to the test object .....: **N(.A.)**
- test object does meet the requirement .....: **P(ass)**
- test object does not meet the requirement.....: **F(ail)**

**Testing**

Date of receipt of test item .....: 09/01/2026 (sample sent by the applicant)  
BEM 124985

Date(s) of performance of tests .....: 20/02/2026 to 23/03/2026

General remarks:

**This report is not valid as a CB Test Report unless signed by an approved CB Testing Laboratory and appended to a CB Test Certificate issued by an NCB in accordance with IECEE 02.**

The test results presented in this report relate only to the object tested.

This report shall not be reproduced, except in full, without the written approval of the issuing testing laboratory.

"(see enclosure #)" refers to additional information appended to the report.

"(see appended table)" refers to a table appended to the report.

Throughout this report a comma point is used as the decimal separator.

Unless otherwise stated the uncertainties for the tests and measurements are evaluated in according to IMQ Operational Instruction IO-LAB-001 and IO-LAB-004.

The uncertainties evaluation has been carried out in accordance with IEC Guide 115 "Application of Uncertainty of measurement's to Conformity Assessment Activity in the Electrotechnical Sector" and IECEE OD-5014. Internal Procedure PG-037 ensures that the requirements for traceability of calibrations, of all test equipment requiring calibration, and calibration intervals are met. The ability of reliability of this product to perform its intended function in a particular application has not been investigated. Unless otherwise specified, warnings, installation instructor and/or user manual provided with the sample have been checked in Italian or English version only.

**Description of the materials used for connecting devices:**

- Material used for the current-carring parts : Brass ;
- Material used for the base : Thermoplastic (colour green or blue) and transparent (polycarbonate);
- Material used for the cover : Polystyrene (colour green or blue);
- $\varnothing$  of the screw : 4,8 mm (16 mm<sup>2</sup>) and 3,9 mm (6 mm<sup>2</sup>) ;
- Material used for the screw: white zinc-plated steel.

*Number of connectable conductors:*

6 mm<sup>2</sup> (1x1,5 - 1x2,5 – 1x4 - 1x6) mm<sup>2</sup> rigid and flexible;  
16 mm<sup>2</sup> (1x4 - 1x6 - 1x10 – 1x16) mm<sup>2</sup> rigid and flexible.

## EN 60 998-2-1:2004 and IEC 60 998-2-1:2002

Cl.	Requirement – Test	Result – Remark	Verdict
-----	--------------------	-----------------	---------

<b>8</b>	<b>MARKING</b>		
8.1	On main part:		
	a) rated connecting capacity (mm <sup>2</sup> ) .....	16 □ 6 □	P
	b) rated insulation voltage (V) .....	400V	N
	c) T marking (°C) (if > 40 °C or < -5 °C) .....		N
	d) type reference .....	See page 12/12	P
	e) manufacturer's or responsible vendor's name, trademark or identification mark.....	SOLERA (logo)	P
	f) IP if > IP20 .....	IP00	N
	Type of acceptable conductor "r" or "f" .....		N
	Small devices: only d) and e) indicated on device		N
	All marks visible on smallest package unit		N
8.2	Multiway terminal devices: at least two adjacent		N
8.4	Marking: durable and easily legible; 15 s water; 15 s hexane		P

<b>9</b>	<b>PROTECTION AGAINST ELECTRIC SHOCK</b>		
	Live parts not accessible	IP00	N

<b>10</b>	<b>CONNECTION OF CONDUCTORS</b>		
10.1	Connecting devices allow correct connection of conductors		P
10.101	Terminals accept two or more conductors and		P
	accept rigid and/or flexible unprepared conductors		P
10.102	Each terminal accepts conductors (table 101) and provides the connection of at least two successive smaller cross-sectional areas:		
	Rated connecting capacity (mm <sup>2</sup> ) .....	16 □ 6 □	P
	Suitable for connecting cross-sectional areas (mm <sup>2</sup> ) .....	Rigid : 6 □:1x1,5mm <sup>2</sup> ; 1x2,5mm <sup>2</sup> ; 1x4mm <sup>2</sup> ; 1x6mm <sup>2</sup> ; 16 □:1x4mm <sup>2</sup> ;1x6mm <sup>2</sup> ; 1x10mm <sup>2</sup> ; 1x16mm <sup>2</sup> . Flexible : 6 □:1x1,5mm <sup>2</sup> ; 1x2,5mm <sup>2</sup> ; 1x4mm <sup>2</sup> ; 1x6mm <sup>2</sup> ; 16 □:1x4mm <sup>2</sup> ;1x6mm <sup>2</sup> ; 1x10mm <sup>2</sup> ; 1x16mm <sup>2</sup> .	P
10.103	Terminals accept rigid and flexible conductors (table 101), unless otherwise specified (see 8.1)		P

## EN 60 998-2-1:2004 and IEC 60 998-2-1:2002

Cl.	Requirement – Test	Result – Remark	Verdict
	Smallest diameter (mm); largest diameter (mm)..... :	Rigid : 6 □: <b>1x1,5mm<sup>2</sup></b> ; 1x2,5mm <sup>2</sup> ; 1x4mm <sup>2</sup> ; <b>1x6mm<sup>2</sup></b> ; 16 □: <b>1x4mm<sup>2</sup></b> ; 1x6mm <sup>2</sup> ; 1x10mm <sup>2</sup> ; <b>1x16mm<sup>2</sup></b> . Flexible : 6 □: <b>1x1,5mm<sup>2</sup></b> ; 1x2,5mm <sup>2</sup> ; 1x4mm <sup>2</sup> ; <b>1x6mm<sup>2</sup></b> ; 16 □: <b>1x4mm<sup>2</sup></b> ; 1x6mm <sup>2</sup> ; 1x10mm <sup>2</sup> ; <b>1x16mm<sup>2</sup></b> .	P
	Tightened and loosened 5 times; torque (Nm); table number..... :	2,0 Nm (∅ screw 4,8 mm) 1,2 Nm (∅ screw 3,9 mm)	P
	During the test: terminals show no damage		P
10.104	Terminals clamp the conductor without undue damage:		
	Smallest cross-sectional area (mm <sup>2</sup> ); height H (mm); mass (kg) .....	See table 1	P
	Largest cross-sectional area (mm <sup>2</sup> ); height H (mm); mass (kg) .....	See table 1	P
	Torque: as 10.103; during the test: the conductor does not slip out, no break near clamping unit and no damage		P
10.105	Pull test:		
	- min. cross-sectional area (mm <sup>2</sup> ); pull (N) .....	See table 2	P
	- max. cross-sectional area (mm <sup>2</sup> ); pull (N) .....	See table 2	P
	- torque (Nm) (table 102).....		P
	- during the test the conductor does not come out		P
10.106	Rigid conductor: rated cross-sectional area (mm <sup>2</sup> ) :	Rigid : 6 □: <b>1x1,5mm<sup>2</sup></b> ; 1x2,5mm <sup>2</sup> ; 1x4mm <sup>2</sup> ; 1x6mm <sup>2</sup> ; 16 □: 1x4mm <sup>2</sup> ; 1x6mm <sup>2</sup> ; 1x10mm <sup>2</sup> ; 1x16mm <sup>2</sup> .	P
	Flexible conductor: rated cross-sectional area (mm <sup>2</sup> ) .....	Flexible : 6 □: <b>1x1,5mm<sup>2</sup></b> ; 1x2,5mm <sup>2</sup> ; 1x4mm <sup>2</sup> ; 1x6mm <sup>2</sup> ; 16 □: 1x4mm <sup>2</sup> ; 1x6mm <sup>2</sup> ; 1x10mm <sup>2</sup> ; 1x16mm <sup>2</sup> .	P
	Torque: as 10.103; after the test no wire of the conductor escaped	2,0 Nm (□ screw 4,8 mm) 1,2 Nm (□ screw 3,9 mm)	P
<b>11</b>	<b>CONSTRUCTION</b>		

## EN 60 998-2-1:2004 and IEC 60 998-2-1:2002

Cl.	Requirement – Test	Result – Remark	Verdict
11.2	Clamping units clamp conductors reliably and between metal surfaces		P
11.3	Connecting devices: insulation of conductors not in contact with live parts of different polarity		P
11.4	Insulating lining: adequate mechanical strength and secured in a reliable manner		P
11.5	Current-carrying parts: adequate mechanical strength, electrical conductivity and resistance to corrosion; type of metal .....	See page 3/12	P
	Current-carrying parts not made with electroplated coating if subjected to mechanical wear		P
11.6	Terminals: possible to connect number of conductors as specified by the manufacturer:		
	- number of conductors .....	Terminals according IEC 60228 and 60334.	P
	- rigid, cross-sectional area (mm <sup>2</sup> ) .....	Rigid : 6 □:1x1,5mm <sup>2</sup> ; 1x2,5mm <sup>2</sup> ; 1x4mm <sup>2</sup> ; 1x6mm <sup>2</sup> ; 16 □:1x4mm <sup>2</sup> ;1x6mm <sup>2</sup> ; 1x10mm <sup>2</sup> ; 1x16mm <sup>2</sup> .	P
	- flexible, cross-sectional area (mm <sup>2</sup> ) .....	Flexible : 6 □:1x1,5mm <sup>2</sup> ; 1x2,5mm <sup>2</sup> ; 1x4mm <sup>2</sup> ; 1x6mm <sup>2</sup> ; 16 □:1x4mm <sup>2</sup> ;1x6mm <sup>2</sup> ; 1x10mm <sup>2</sup> ; 1x16mm <sup>2</sup> .	P
11.7	Fixing means of bases do not serve any other purpose		N/A
11.101	Screws and nuts of earthing terminals adequately locked against accidental loosening		N/A
	Not possible to loosen without a tool		N/A
11.102	Screws and nuts do not serve to fix any other component, and		P
	are not of metal which is soft, such as zinc or aluminium		P
11.103	Rigid wire or wire of flexible conductor cannot slip out		P
11.104	Terminals permit insertion of largest conductor:		
	- rigid conductors: cross-sectional area (mm <sup>2</sup> ); max. diameter (mm) .....	16 mm <sup>2</sup> (1 conductors) verified with cables) ; 6 mm <sup>2</sup> (1 conductors) verified with cables).	P
	- flexible conductors: cross-sectional area (mm <sup>2</sup> ); max. diameter (mm) .....	16 mm <sup>2</sup> (1 conductors) verified with cables) ; 6 mm <sup>2</sup> (1 conductors) verified with cables).	P

EN 60 998-2-1:2004 and IEC 60 998-2-1:2002

Cl.	Requirement – Test	Result – Remark	Verdict
-----	--------------------	-----------------	---------

12	<b>RESISTANCE TO AGEING, TO HUMIDITY CONDITIONS, TO INGRESS OF SOLID OBJECTS AND TO HARMFUL INGRESS OF WATER</b>		
12.1	Connecting devices resistant to ageing; after the test (168 h): no cracks visible, not sticky or greasy, no damage; test temperature (°C) .....	<input checked="" type="checkbox"/> 70 °C <input type="checkbox"/> T + 30 =	P
12.2	After humidity test (91-95%): no damage; test duration (168 h for connecting devices > IPX2, 48 h for all other).....	<input checked="" type="checkbox"/> 168 h <input type="checkbox"/> 48 h	P
12.3	IP test (IEC 529) .....		N
	After the test, electric strength test as 13.4, and		N
	no appreciable entry of water		N

13	<b>INSULATION RESISTANCE AND ELECTRIC STRENGTH</b>		
13.3	Clamping unit connected with: smallest cross-sectional area (mm <sup>2</sup> ); largest cross-sectional area (mm <sup>2</sup> ) .....	smallest: 1,5mm <sup>2</sup> (rigid/flexible); smallest: 4 mm <sup>2</sup> (rigid/flexible). largest: 6 mm <sup>2</sup> (rigid/flexible); largest: 16 mm <sup>2</sup> (rigid/flexible).	—
	Insulation resistance (500 V d.c. for 1 min):		
	1) between all clamping units connected together and the body > 5 MΩ.....	5,1 MΩ	P
	2) between each clamping unit and all others connected to the body > 5 MΩ.....	-	N
	3) between metal foil and the body > 5 MΩ.....	-	N
	3a) if necessary, between live parts and metal covers and enclosures > 5 MΩ.....	-	N
	3b) if necessary, between live parts and surface on which the base is mounted > 5 MΩ .....	-	N
13.4	Electric strength (a.c. for 1 min): no flashover or breakdown:		
	1) test voltage (V) .....	2500 V	P
	2) test voltage (V) .....	-	N
	3) test voltage (V) .....	-	N
	3a) test voltage (V) .....	-	N
	3b) test voltage (V) .....	-	N

14	<b>MECHANICAL STRENGTH</b>		
14.2	Tumbling barrel (for < 50 g): 50 falls; after the test no damage	<50 g	P
14.3	Impact test (for > 50 g): 10 blows:		
	- height of fall: 7,5 cm		N

## EN 60 998-2-1:2004 and IEC 60 998-2-1:2002

Cl.	Requirement – Test	Result – Remark	Verdict
-----	--------------------	-----------------	---------

	- height of fall: 10 cm		N
	- height of fall: 20 cm		N
	- height of fall: 25 cm	>50g	P
	After the test, no damage and live parts shall not become accessible		P
<b>15</b>	<b>TEMPERATURE RISE</b>		
	Terminal.....	<input type="checkbox"/> single <input checked="" type="checkbox"/> multiway	—
	T marking (°C).....	<input type="checkbox"/> yes: (°C)	N
	Largest cross-sectional area (mm <sup>2</sup> ).....	1x6 mm <sup>2</sup> and 1x16 mm <sup>2</sup>	—
	Conductors .....	rigid	P
	Torque (Nm); table number.....	2 Nm and 1,2 Nm (2/3 of 1,33 Nm and 0,8 Nm)	—
	Rated connecting capacity (mm <sup>2</sup> ).....	13x6 mm <sup>2</sup> 4x16 mm <sup>2</sup> (clamp taken for reference to do heating item 113N-1)	—
	Test current (A).....	80 A	—
	Temperature rise does not exceed 45 K (1).....	30,5 K	P
	Temperature rise does not exceed 45 K (2).....	30 K	P
	Temperature rise does not exceed 45 K (3).....	31 K	P

<b>16</b>	<b>RESISTANCE TO HEAT</b>		
16.2	Heating cabinet: no damage, after the test, markings still legible; test temperature (°C)	<input type="checkbox"/> 85 °C <input checked="" type="checkbox"/> T + 45 = 125 °C	P
16.3	Ball-pressure test (125 °C) for parts necessary to retain current-carrying parts in position	125 °C	P
	Diameter of impression not exceeding 2 mm.....	1,4 mm	P
	Ball-pressure test for parts not necessary to retain current-carrying parts in position; test temperature (°C).....	<input checked="" type="checkbox"/> 70 °C <input type="checkbox"/> 40 + ...	P
	Diameter of impression not exceeding 2 mm.....	0,9 mm	P

<b>17</b>	<b>CREEPAGE DISTANCES, CLEARANCES AND DISTANCES THROUGH SEALING COMPOUND</b>		
	Creepage distances (mm) and clearances (mm) between live parts of different polarity .....		—
	idem, requirement (mm).....		N/A
	Creepage distances (mm) and clearances (mm) between live parts and metal covers and enclosures .....		—

## EN 60 998-2-1:2004 and IEC 60 998-2-1:2002

Cl.	Requirement – Test	Result – Remark	Verdict
	idem, requirement (mm)..... :		N
	Creepage distances (mm) and clearances (mm) between live parts and surface on which the base is mounted .....	> 4 mm	—
	idem, requirement (mm)..... :	4 mm	P
	Distances (mm) through sealing compound between live parts and surface on which the base is mounted .....		—
	idem, requirement (mm)..... :		N
<b>18</b>	<b>RESISTANCE OF INSULATING MATERIAL TO ABNORMAL HEAT AND FIRE</b>		
	Glow-wire test (850 °C) for parts necessary to retain current-carrying parts in position	Base (see page 3/12)	P
	Glow-wire test (650 °C) for parts not necessary to retain current-carrying parts in position	Cover (see page 3/12)	N
	No visible flames and no sustained glowing, or if flame and glowing, extinguish within 30 s .....	2 s	P
	No ignition of the tissue paper or scorching of the board		P
<b>19</b>	<b>RESISTANCE OF INSULATING MATERIAL TO TRACKING</b>		
	50 drops, 175 V, solution A (IEC 112): no flashover		P

**Table 1 : Relationship between mass,height and cross-sectional area of conductors**

<b>Clamping unit</b>	<b>Type of conductor</b>	<b>N°/section</b>	<b>Height (mm)</b>	<b>Mass (Kg)</b>	<b>Remarks</b>
<b>(*) 6 mm<sup>2</sup> and 16 mm<sup>2</sup></b>	<b>Rigid</b>	1 x 1,5 mm <sup>2</sup> (*)	260	0,4	Pass
		1 x 2,5 mm <sup>2</sup> (*)	280	0,7	Pass
		<b>1 x 4 mm<sup>2</sup> (*)</b>	<b>280</b>	<b>0,9</b>	<b>Pass</b>
		<b>1 x 6 mm<sup>2</sup> (*)</b>	<b>280</b>	<b>1,4</b>	<b>Pass</b>
		<b>1 x 10 mm<sup>2</sup></b>	<b>280</b>	<b>2,0</b>	<b>Pass</b>
		<b>1 x 16 mm<sup>2</sup></b>	<b>300</b>	<b>2,9</b>	<b>Pass</b>
	<b>Flexible</b>	1 x 1,5 mm <sup>2</sup> (*)	260	0,4	Pass
		1 x 2,5 mm <sup>2</sup> (*)	280	0,7	Pass
		<b>1 x 4 mm<sup>2</sup> (*)</b>	<b>280</b>	<b>0,9</b>	<b>Pass</b>
		<b>1 x 6 mm<sup>2</sup> (*)</b>	<b>280</b>	<b>1,4</b>	<b>Pass</b>
		<b>1 x 10 mm<sup>2</sup></b>	<b>280</b>	<b>2,0</b>	<b>Pass</b>
		<b>1 x 16 mm<sup>2</sup></b>	<b>300</b>	<b>2,9</b>	<b>Pass</b>

**Table 2 : Relationship between pull force and cross-sectional area**

Clamping unit	Type of conductor	N°/section	Pull force (N)	Remarks
(*) 6 mm <sup>2</sup> and <b>16 mm<sup>2</sup></b>	Rigid	1 x 1,5 mm <sup>2</sup> (*)	40	Pass
		1 x 2,5 mm <sup>2</sup> (*)	50	Pass
		<b>1 x 4 mm<sup>2</sup> (*)</b>	60	Pass
		<b>1 x 6 mm<sup>2</sup> (*)</b>	80	Pass
		<b>1 x 10 mm<sup>2</sup></b>	90	Pass
		<b>1 x 16 mm<sup>2</sup></b>	100	Pass
	Flexible	1 x 1,5 mm <sup>2</sup> (*)	40	Pass
		1 x 2,5 mm <sup>2</sup> (*)	50	Pass
		<b>1 x 4 mm<sup>2</sup> (*)</b>	60	
		<b>1 x 6 mm<sup>2</sup> (*)</b>	80	Pass
		<b>1 x 10 mm<sup>2</sup></b>	90	Pass
		<b>1 x 16 mm<sup>2</sup></b>	100	Pass

<i>Measurement / testing</i>	<i>Testing / measuring equipment / material used, (Equipment ID)</i>	<i>Last Calibration date</i>	<i>Calibration due date</i>
<i>Electric strength</i>	<i>Apparatus P02788</i>	<i>12/06/2025</i>	<i>12/06/2026</i>
<i>Heating test</i>	<i>Numeral multimeter S08920</i>	<i>21/02/2026</i>	<i>21/02/2027</i>
<i>Heating test</i>	<i>Thermometer S04653</i>	<i>26/02/2026</i>	<i>26/02/2027</i>
<i>Glow-wire test</i>	<i>Apparatus P01893</i>	<i>22/01/2026</i>	<i>22/01/2027</i>
<i>Amperometric clamp</i>	<i>Apparatus S04238</i>	<i>22/02/2026</i>	<i>22/02/2027</i>

## **Connecting devices description :**

**Catalogue Reference :** 224 N (12x6mm<sup>2</sup> (x2) and 2x16mm<sup>2</sup> (x2) - double connecting devices - colour blue);

**Catalogue Reference :** 113N-1 (13x6mm<sup>2</sup> and 4x16mm<sup>2</sup> - cover colour blue - base transparent);

**Catalogue Reference :** 113PE-1 (13x6mm<sup>2</sup> and 4x16mm<sup>2</sup> - cover colour green - base transparent);

**Catalogue Reference :** F112P (12x6mm<sup>2</sup> and 2x16mm<sup>2</sup> - colour green);

**Catalogue Reference :** 105N (5x6mm<sup>2</sup> - cover colour blue - base transparent);

**Catalogue Reference :** 128N (28x6mm<sup>2</sup> and 6x16mm<sup>2</sup> - cover colour blue - base transparent);

**Catalogue Reference :** 224PT (12x6mm<sup>2</sup> (x2) and 2x16mm<sup>2</sup> (x2) - double connecting devices - colour green);

**Catalogue Reference :** 212TT (12x6mm<sup>2</sup> and 2x16mm<sup>2</sup> - colour green);

**Catalogue Reference :** F112N (12x6mm<sup>2</sup> and 2x16mm<sup>2</sup> - colour blue);

**Catalogue Reference :** 212N (12x6mm<sup>2</sup> and 2x16mm<sup>2</sup> - colour blue);

**Catalogue Reference :** 105PE (5x6mm<sup>2</sup> - cover colour green - base transparent);

**Catalogue Reference :** F106N (6x6mm<sup>2</sup> and 1x16mm<sup>2</sup> - colour blue);

**Catalogue Reference :** F106P (6x6mm<sup>2</sup> and 1x16mm<sup>2</sup> - colour green);

**Catalogue Reference :** 128PE (28x6mm<sup>2</sup> and 6x16mm<sup>2</sup> - cover colour green - base transparent);

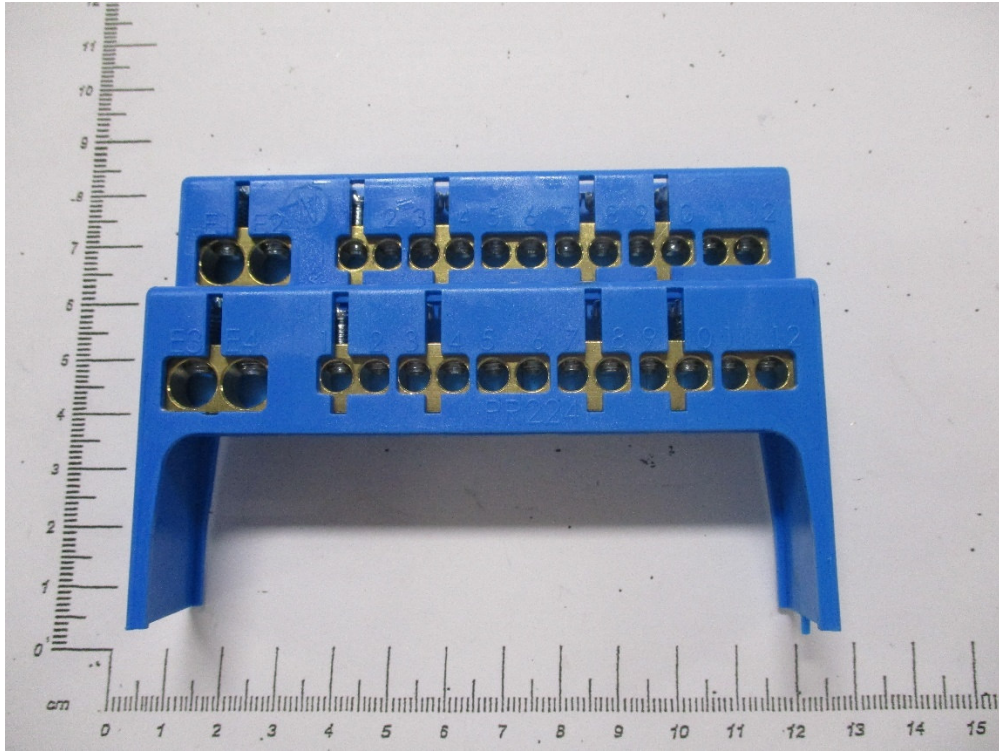
**Catalogue Reference :** 180PE (18x6mm<sup>2</sup> and 6x16mm<sup>2</sup> - cover colour green - base transparent);

**Catalogue Reference :** 180N (18x6mm<sup>2</sup> and 6x16mm<sup>2</sup> - cover colour blue - base transparent);

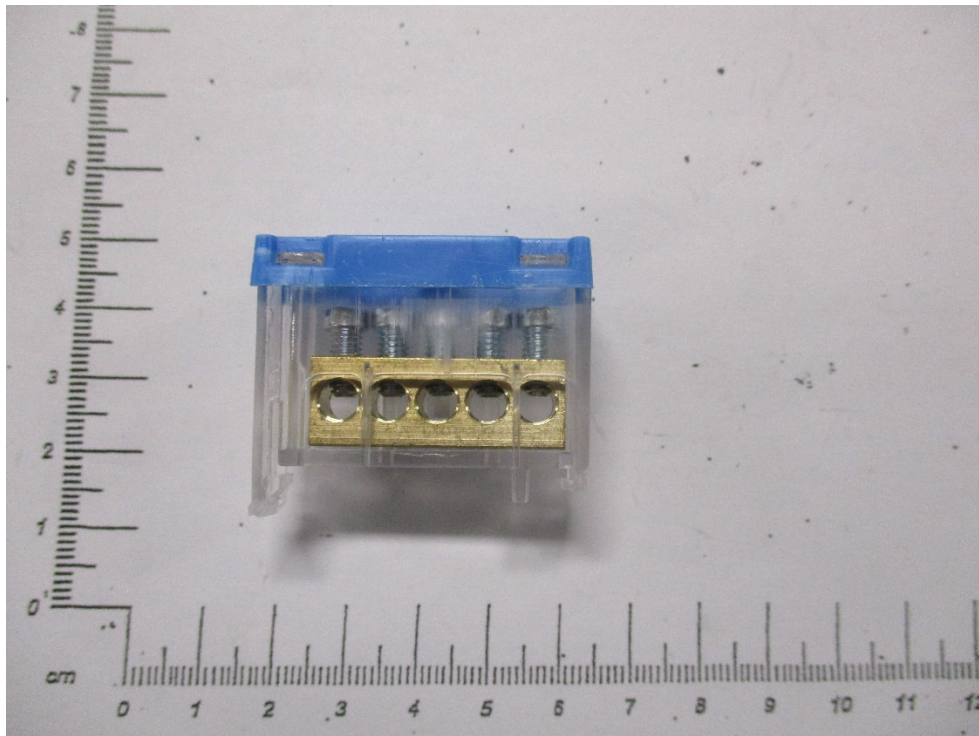
**Catalogue Reference :** 113N (13x6mm<sup>2</sup> and 4x16mm<sup>2</sup> - cover colour blue - base transparent);

**Catalogue Reference :** 113PE (13x6mm<sup>2</sup> and 4x16mm<sup>2</sup> - cover colour green - base transparent);

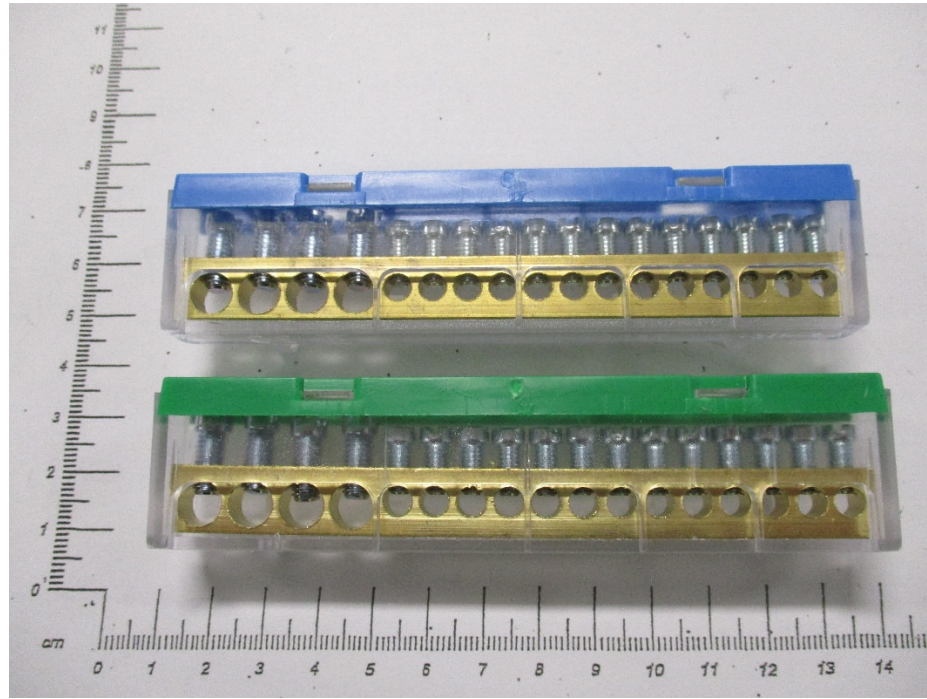
**Catalogue Reference :** 113PE/N (13x6mm<sup>2</sup> and 4x16mm<sup>2</sup> - cover colour green - 13x6mm<sup>2</sup> and 4x16mm<sup>2</sup> - Cover colour blue - base transparent).



**Type Reference : 224N**



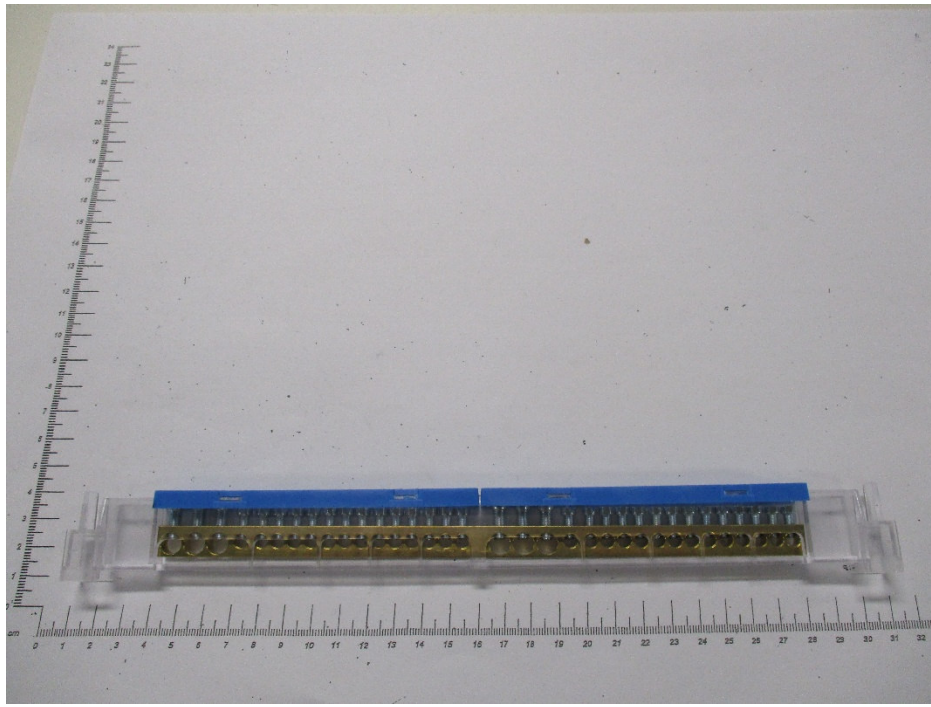
**Type Reference : 105N**



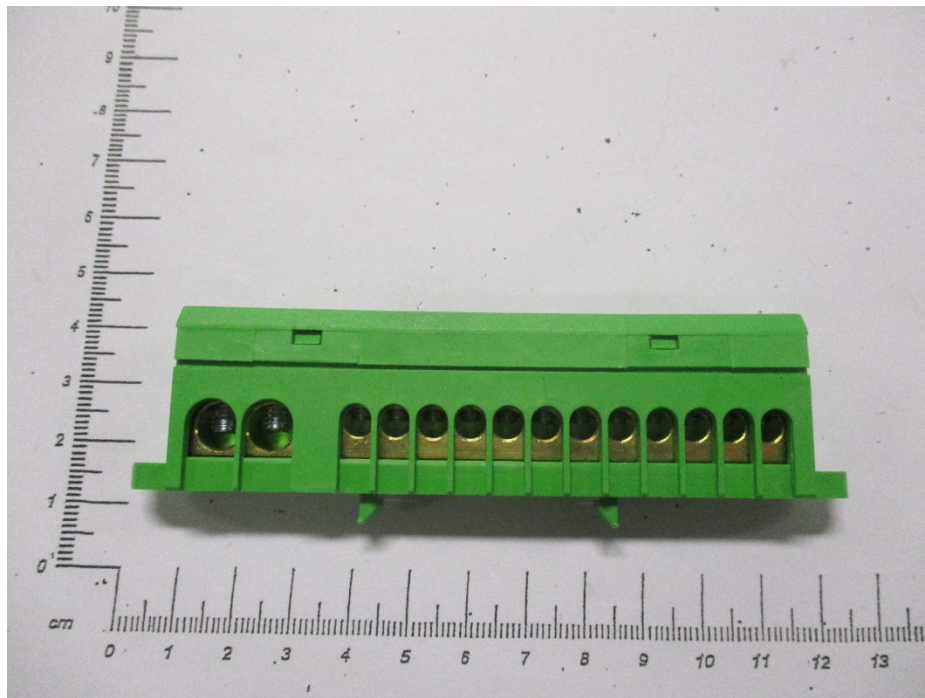
**Type Reference : 113PE-1 and 113N-1**



**Type Reference : 113PE-1 and 113N-1**



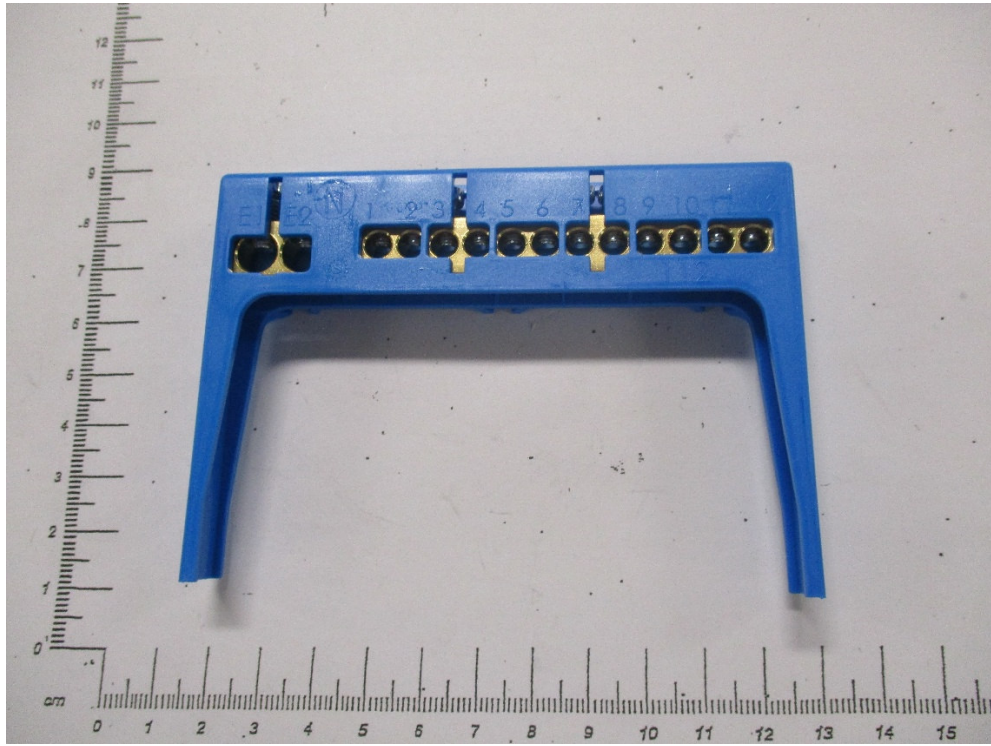
**Type Reference : 128N**



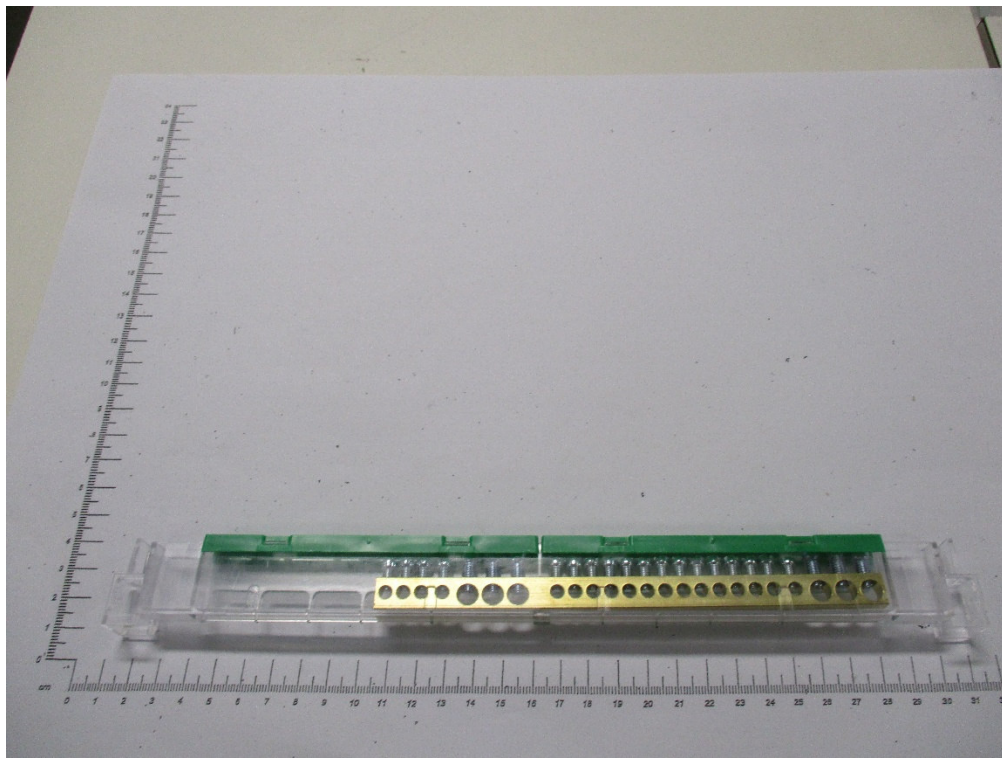
**Type Reference : F112P**

Annex 1:Photographics documentation

---



**Type Reference : 212N**



**Type Reference : 180PE**