

Solera[®]

MODE D'EMPLOI ET DE SÉCURITÉ

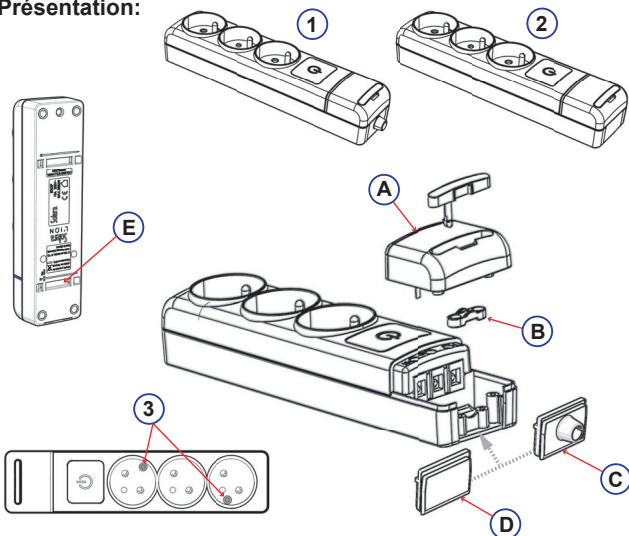
FRANÇAIS

L'ION

BLOCS MULTIPRISES ET PROLONGATEURS.

SERIE L'ION

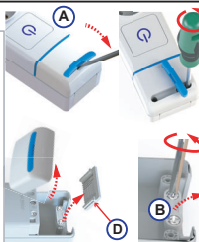
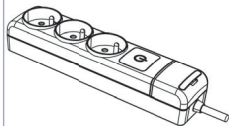
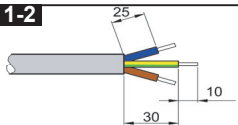
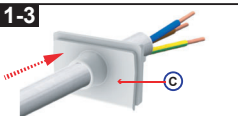
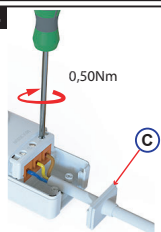
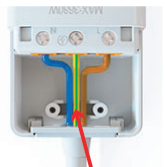
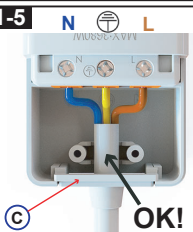
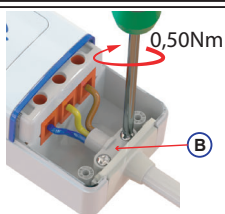
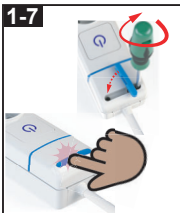
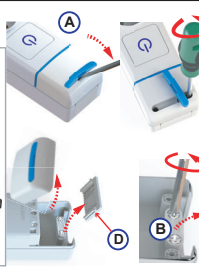
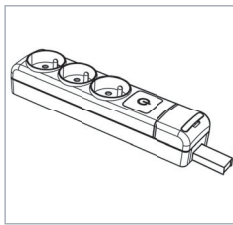
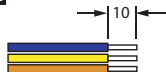
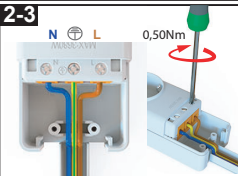
Présentation:

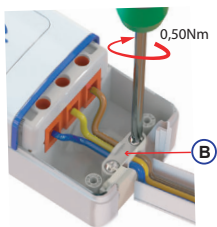
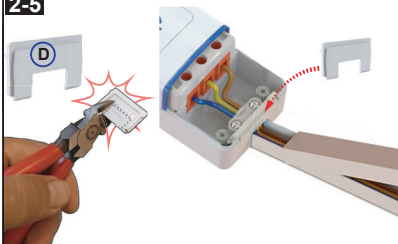
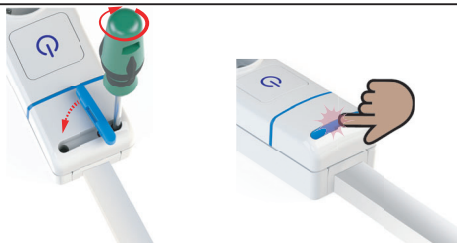
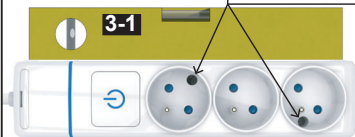


Normatif:

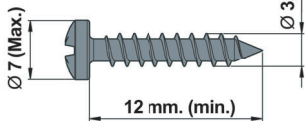
- Conforme aux normes NF C61-314 - Pour une installation sûre, suivez les instructions du Règlement Electrotechnique Basse Tension.

- L'installation, l'entretien et la maintenance de l'équipement électronique ne peuvent être effectués que par une personne autorisée.

1-1**1-2****1-3****1-4****1-5****1-6****1-7****2-1****2-2****2-3**

2-4**2-5****2-6****3** Fixation au mur:**3-2****3-3****3-4****3-1**

Ø 7 (Max.)

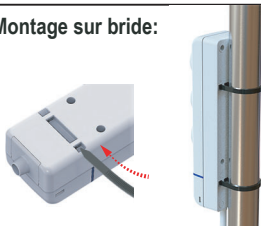


Ø 3,5 (Max.)

12 mm. (min.)

E

Montage sur bride:



Conseils généraux de sécurité et d'utilisation:



Información Técnica:



Gestion des emballages et des déchets de produits:

DÉCHETS DES CONTENEURS			DÉCHETS DES PRODUITS		
MATÉRIEL	DÉPÔT EN:	LOGO	RESIDUOS	DEPOSITAR EN:	LOGOTIPO
PLASTIQUE	CONTENEUR JAUNE		DEEE	POINT DE VENTE: Écoparc municipal.	
PAPIER ET CARTON	CONTENEUR JAUNE				