

BYCLA

New plugs and sockets

Made in Spain

- Made of recyclable TPE Elastomer.
- SOFT touch & better grip.
- Robust and easy connection terminals.
- Plugs and sockets 2P+E 16A 250V~.
- Plugs with double earth system.
- Supports conductors up to 2.5mm².



Bycla range

Solera[®]

New plugs and sockets

Made in Spain

IP20



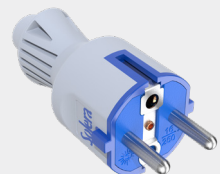
Ref. 706CK

IP20. Plug 2P+E, 16A 250V~. Double earth system. Folding cable clamp.



Ref. 707CK

IP20. Socket 2P+E, 16A 250V~. Folding cable clamp.



Ref. 706CKB

IP20. Plug 2P+E, 16A 250V~. Double earth system. Folding cable clamp.



Ref. 707CKB

IP20. Socket 2P+E, 16A 250V~. Folding cable clamp.



IP44

Ref. 5706CK

IP44. Plug 2P+E, 16A 250V~. Double earth system. Folding cable clamp.



Ref. 5707CK

IP44. Socket 2P+E, 16A 250V~. Folding cable clamp.



Ref. 5706CKB

IP44. Plug 2P+E, 16A 250V~. Double earth system. Folding cable clamp.



Ref. 5707CKB

IP44. Socket 2P+E, 16A 250V~. Folding cable clamp.



IP54

Ref. 706TK

IP54. Plug 2P+E, 16A 250V~. Double earth system. With cable gland



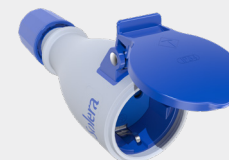
Ref. 707TK

IP54. Socket 2P+E, 16A 250V~. With cable gland.



Ref. 706TKB

IP54. Plug 2P+E, 16A 250V~. Double earth system. With cable gland



Ref. 707TKB

IP54. Socket 2P+E, 16A 250V~. With cable gland