

Solutions for hollow partition

Mechanisms boxes
Back junction boxes
Distribution boxes
IT boxes



Mechanisms boxes

Efficient boxes with claw or cable ties fixing system

Save up to

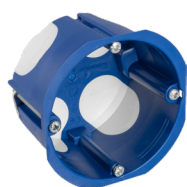
92%

air lost



5625E

Ø68x46.
1 module.
2xØ20-25, 2xØ16.



5625EG

Ø68x46.
1 module.
2xØ20-25, 2xØ16.



5725E

139x68x46.
2 modules.
4xØ20-25, 2xØ20-16.



5725EG

139x68x46.
2 modules
4xØ20-25, 2xØ20-16.



5825E

219x68x46.
3 modules.
4xØ20-25, 4xØ20-16.



5825EG

219x68x46.
3 modules.
4xØ20-25, 4xØ20-16.

Conventional boxes with claw or cable ties fixing system



5625GW

Ø68x46.
1 module.
4xØ20, 2xØ25.



5625

Ø68x46.
1 module.
4xØ20, 2xØ25.



5725GW

139x68x46.
2 modules.
6xØ20-25, 2xØ16.



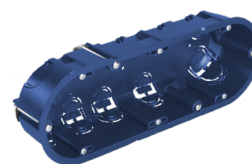
5725

140x68x46.
2 modules.
4xØ20, 4xØ25.



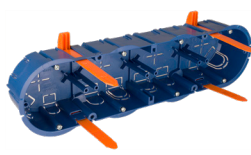
5825GW

219x68x46.
3 modules.
4xØ20-25, 4xØ20-16.



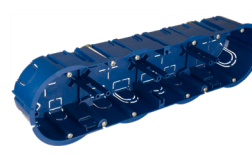
5825

218x68x46.
3 modules.
6xØ20, 4xØ25.



5925GW

281x68x46.
4 modules.
4xØ16-20, 4xØ20-25.

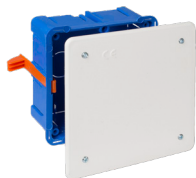


5925

281x68x46.
4 modules.
12xØ20, 8xØ25, 4xØ16

Back junction boxes

Fixing system with nylon ties



5362GW & 5562GW

107x107x45.
12xØ25. Cover with screws.
Ref.5562GW cover with metal plate.



5363GW & 5563GW

170x112x47.
16xØ25. Cover with screws.
Ref.5563GW cover with metal plate.



5314GW

188x148x50.
8xØ25, 2xØ32, 6xØ40.
Cover with screws.



324GW

252x252x50.
12xØ25, 12xØ30.
Cover with screws.

Conventional boxes with claw fixing system



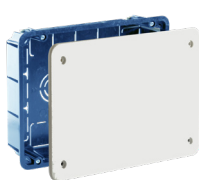
5362 & 5562

107x107x45.
12xØ25. Cover with screws.
Ref.5562 cover with metal plate.



5363 & 5563

170x112x47.
16xØ25. Cover with screws.
Ref.5563 cover with metal plate.



5314

188x148x50.
8xØ25, 2xØ32, 6xØ40.
Cover with screws.



5324

252x252x50.
12xØ25, 12xØ30.
Cover with screws.



5530GW & 5530GWD

300x150x75. Empty.
Suitable for home automation installations.
Ref.5530GWD box with DIN rail.



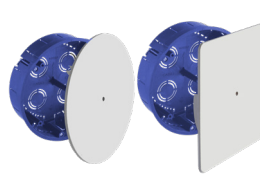
5440GW

390x150x60.
Cover with screws.



5514GW

Ø100x46.
10xØ25.
Cover with central screw.



5515GW & 5516GW

Ø150x46.
14xØ25 y 4xØ32.
Round cover with plastic claw
Ref.5516GW Square leveling cover.



5506HGW

300x500x60.
50xØ40.
Cover with screws.

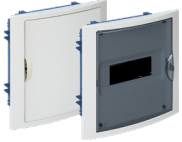


5507HGW

300x500x60.
50xØ40. With white frame and door.

Distribution box

Thermoplastic boxes with claw fixing system



5108HGW & 5108PFHGW

205x233x72.
8 modules.
Ref.5108PFHGW With fume door.



5012HGW & 5012PFHGW

320x233x75.
14 modules.
Ref.5012PFHGW With fume door.



8690HGW & 8690PFHGW

450x222x72.
22 modules.
Ref.8690PFHGW With fume door.



5250HGW & 5250PFHGW

320x420x75.
28 modules.
Ref.5250PFHGW With fume door.



5260HGW & 5260PFHGW

360x528x86.
42 modules.
Ref.5260PFHGW With fume door.



5270HGW & 5270PFHGW

320x570x75.
56 modules.
Ref.5270PFHGW With fume door.

Thermoplastic boxes with metal frame and door and claw fixing system



MPB1E14HGW & MPB1E14NGHGW

333x300x88.
14 modules.
Ref.MPB1E14NGHGW graphite colour.



MPB2E28HGW & MPB2E28NGHGW

333x435x88.
28 modules.
Ref.MPB2E28NGHGW graphite colour.



MPB3E42HGW & MPB3E42NGHGW

333x620x88.
42 modules.
Ref.MPB3E42NGHGW graphite colour.



MPB4E56HGW & MPB4E56NGHGW

320x420x75.
56 modules.
Ref.MPB4E56NGHGW graphite colour.

Other solutions for hollow partition

IT boxes



MP42/2HGW

698x613x88.
Empty box.



MP42/2BHGW

698x613x88.
With 2 sockets.



5504/2HGW

685x530x85.
Empty box.



5260TRHGW

720x528x86.
Empty box. Metal door
and frame.

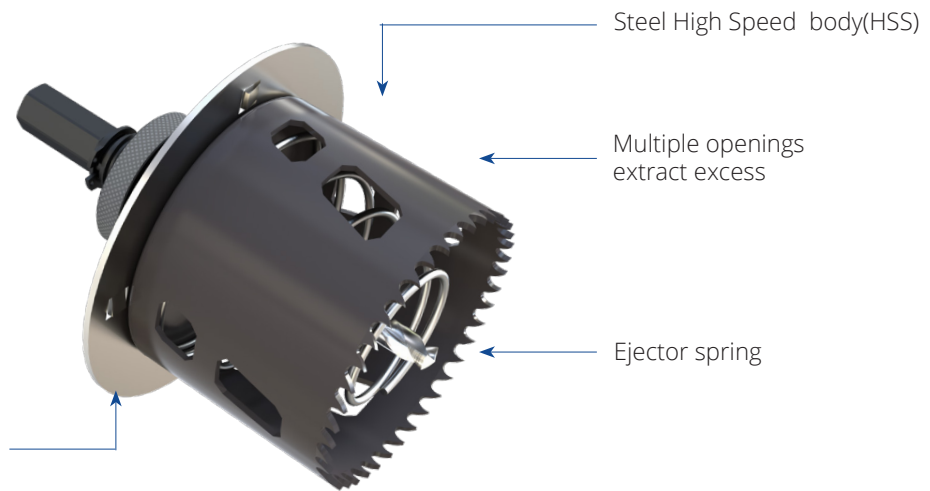
Accessories

COR68TH

Valid for:

- Plaster
- Gypsum fiber
- Wood
- Chipboard
- Soft metals
- Plastics

The removable countersink allows the mechanism to be completely plane with the wall



COR-68S

68mm diameter crown
body.



AC-68

Countersink plate for
COR68TH.



M68

Ejector spring.



7157

Template to mark the
holes of the blue me-
chanism boxes in the
partition.



Portalámparas y Accesorios Solera S.A.U.

C/ Villa de Madrid, 53

46988 Paterna (Valencia) España

T.: +34 96 132 23 01

e.: solera@psolera.com - export@psolera.com

Discover all the news at
www.psolera.com

or

