



Switches & sockets: Surface / *Appareillage* *en surface*



SWITCHES & SOCKETS
APPAREILLAGE

Pg. 180

Complementary products

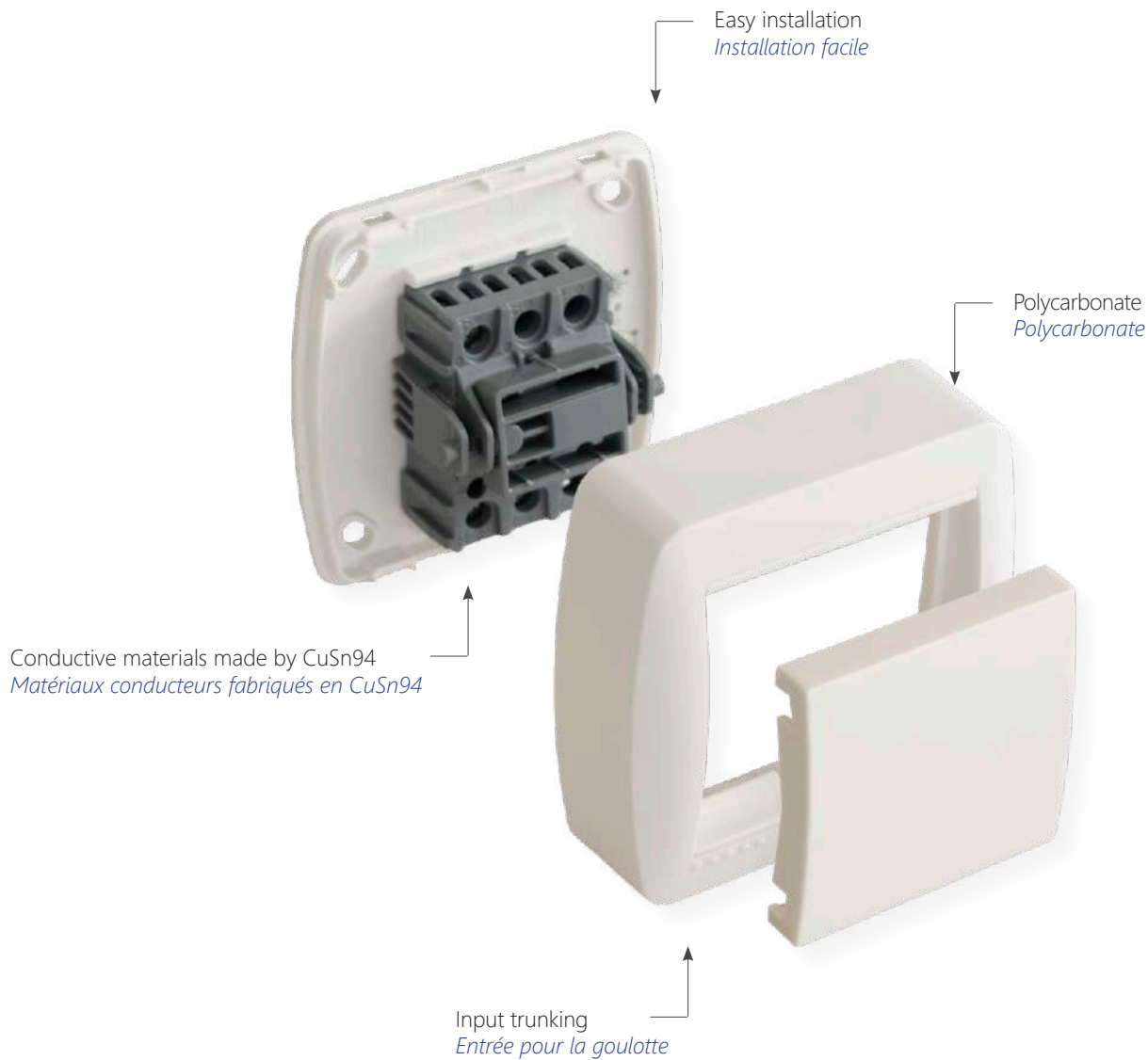


Pg. 188



Pg. 222

Product characteristics / *Caractéristiques du produit*



Technical information / *Information technique*

- Complies with Directive 2014/35/EU & 2011/65/EU (RoHS).
 - Manufactured under EN 60669.
 - Input trunking 10x16, 10x20, 16x16.
 - Dimensions: Width x Height x Depth (mm).
- *Conforme à la Directive 2014/35/EU et 2011/65/EU (RoHS).*
 - *En accord avec EN 60669.*
 - *Entrée pour la goulotte 10x16, 10x20, 16x16.*
 - *Dimensions: Largeur x Hauteur x Profondeur (mm).*

Advantages / *Avantages*

CuSn94

Conductive materials made
by CuSn94
*Matériaux conducteurs
fabriqués en CuSn94*

PC

Polycarbonate
Polycarbonat



Easy installation
Installation facile



Input trunking
Entrée pour la goulotte



Unit packaging
Packaging unitaire



Packaging
Packaging

Technical logos / *Logos techniques*



RoHS / *RoHS*



CE Certification / *Certification CE*



Halogen Free / *Sans Halogène*

Download / *Télécharger*



More information



Plus d'information

Switches & sockets / *Appareillages*



Ref. MUR02U

Ref. MUR22U

2-way switch 10AX 250V~. 74x72x28.
Commutateur / interrupteur 10AX 250V~. 74x72x28.
 (Ref. MUR22U 2-pole switch / *Interrupteur bipolaire*)



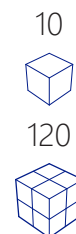
Ref. MUR02ILU

Lighted 2-way switch 10AX 250V~. 74x72x28.
Commutateur lumineux 10AX 250V~. 74x72x28.



Ref. MUR12U

Double 2-way switch 10AX 250V~. 74x72x28.
Double commutateur 10AX 250V~. 74x72x28.



Ref. MUR09U

Crossover switch 10AX 250V~. 74x72x28.
Commutateur point de croisement 10AX 250V~. 74x72x28.



Ref. MUR03U

Bell push button 10A 250V~. 74x72x28.
Poussoir cloche 10A 250V~. 74x72x28.



Ref. MUR04U

Light push button 10A 250V~. 74x72x28.
Poussoir lumière 10A 250V~. 74x72x28.



Ref. MUR60U

Ref. MUR60FU

Socket 2P+E 16A 250V~. 74x72x42.
Prise 2P+T 16A 250V~. 74x72x42.
 (Ref. MUR60FU French system / *Système français*)



Ref. MUR07U

Socket 2P 16A 250V~. 74x72x28.
Prise 2P 16A 250V~. 74x72x28.



Ref. MUR66U

Ref. MUR66FU 

Double socket 2P+E 16A 250V~. 148x72x42.
Prise double 2P+T 16A 250V~. 148x72x42.
(Ref. MUR66FU French system / *Système français*)



Ref. MUR36U

Socket 2P+E 16A 250V~ + double 2-way switch.
148x72x42.
Prise 2P+T 16A 250V~ + double interrupteur.
148x72x42.



Ref. MUR63U

Ref. MUR63FU 

Socket 2P+E 16A 250V~ + 2-way switch. 148x72x42.
Prise 2P+T 16A 250V~ + interrupteur. 148x72x42.
(Ref. MUR63FU French system / *Système français*)



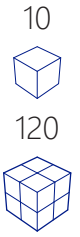
Ref. MUR96U

Socket 2P+E 16A 250V~ + crossover switch.
148x72x42.
Prise 2P+T 16A 250V~ + interrupteur point de croisement 148x72x42.



Ref. MUR94U

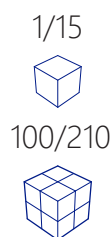
TV connector. 74x72x28.
TV connecteur. 74x72x28.



Ref. MUR84U

Ref. MUR88U

Telephone connector RJ11. 74x72x28.
Prise téléphone RJ11. 74x72x28.
Ref. MUR88U Data connector RJ45, Cat 5e. 74x72x28.
Réf. MUR88U Prise de données RJ45, Cat 5e. 74x72x28.



Ref. MUR02/2U

Ref. MUR03/2U

2-way switch narrow 10AX 250V~. 74x72x28.
Commutateur / interrupteur étroit 10AX 250V~.
(Ref. MUR03/2U Ligth push button narrow/
Poussoir étroit)



Ref. MUR64U

Ref. MUR62U

Double junction box. 148x72x28.
Boîte double jonction. 148x72x28.
(Ref. MUR62U junction box 74x72x28 / *Boîte jonction*)