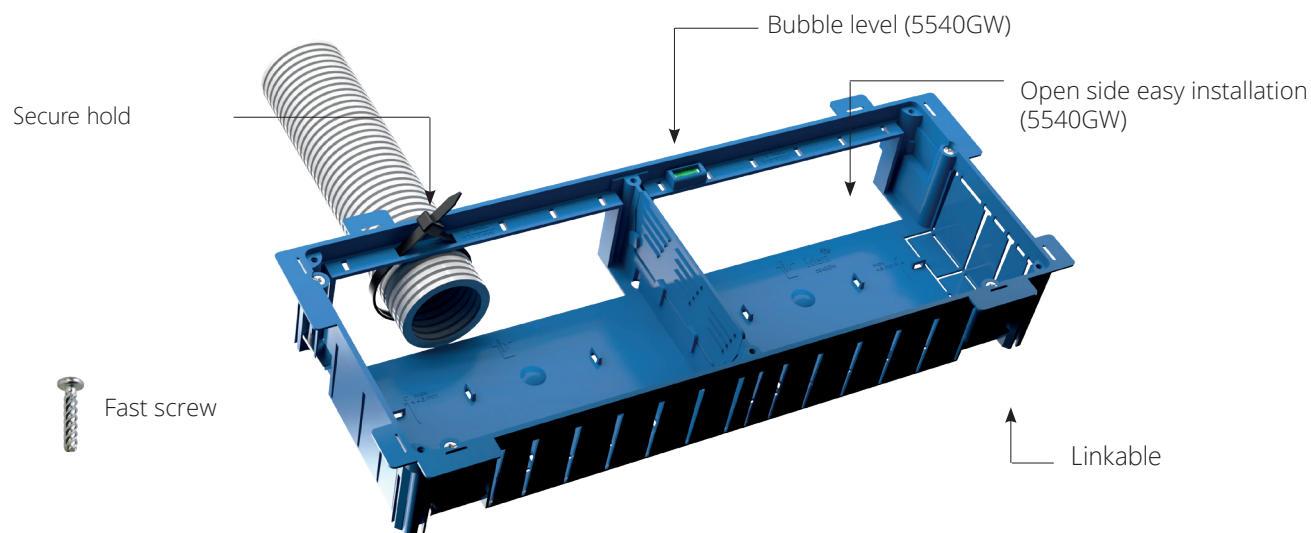


Maximum space in your installation

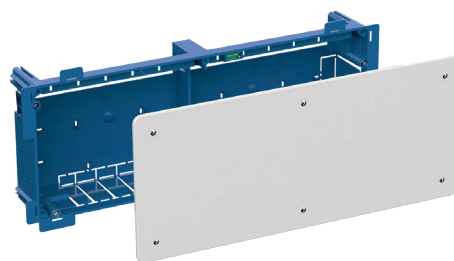
Discover the new junction boxes for hollow partition by Solera

Shape and dimensions adapted to new installation trends



5530GWD & 5530GW

- ✓ It can be used both as a connection box and as a box for home automation modules 300 x 150 x 75 mm.
- ✓ Larger and stronger metal claws for fixing to dry walls.
- ✓ Cover with ultra-fast locking screw.
- ✓ Ref. 5530GWD with rail DIN.



5540GW

- ✓ 390 x 150 x 60 mm
- ✓ Extra-strong metal clamps for fixing on dry walls.
- ✓ Bubble level.
- ✓ Cover with ultra-fast locking screw.



Technical information
5540GW



Technical information
5530GW

