



Industrial plugs & sockets / *Fiches et prises industrielles*



INDUSTRIAL PLUGS & SOCKETS
FICHES ET PRISES INDUSTRIELLES

Pg. 64



FITTED PLUGS & SOCKETS
PRISES ET FICHES TABLEAU

Pg. 66



SURFACE FLUSH PLUGS & SOCKETS
FICHES ET PRISES MURAUX

Pg. 68

Complementary products



Pg. 96



Pg. 44



Pg. 90

Product characteristics / *Caractéristiques du produit*



Technical information / *Information technique*

- Complies with Directive 2014/35/EU & 2011/65/EU (RoHS).
 - Manufactured under EN 60309-1 & EN 60309-2.
 - 125 °C ball pressure test.
 - Dimensions: Width x Height x Depth (mm).
- *Conforme à la Directive 2014/35/EU et 2011/65/EU (RoHS).*
 - *Conforme à la Norme EN 60309-1 et EN 60309-2.*
 - *125 °C Essai de pression à la bille.*
 - *Dimensions: Largeur x Hauteur x Profondeur (mm).*

Advantages / *Avantages*



Gland system
Système de presse-étoupe



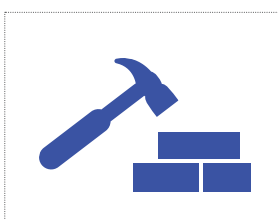
Easy installation
Installation facile



Polyamide 6
Polyamide 6



Wide range
Large gamme



High resistance
Haute résistance



Halogen Free
Sans Halogène

Technical logos / *Logos techniques*



IP44-67

IP44-67 / *IP44-67*



IK09

IK09 / *IK09*



850°C

GWT 850°C / *850°C GWT*



RoHS

RoHS / *RoHS*



HF

Halogen Free / *Sans Halogène*



CE Certification / *Certification CE*

Download / *Télécharger*



More information




Plus d'information

Industrial plugs / *Fiches industrielles*




IP44. Industrial plug / *IP44. Fiche industrielle.*

| Ref. / Réf. | Description | Description |  |
|-------------|------------------------|------------------------|---|
| 902131AB | 2P+E, 16A-6h, 230V~. | 2P+T, 16A-6h, 230V~. | 10/180 |
| 902142AB | 3P+E, 16A-6h, 400V~. | 3P+T, 16A-6h, 400V~. | 8/144 |
| 902152AB | 3P+N+E, 16A-6h, 400V~. | 3P+N+T, 16A-6h, 400V~. | 8/144 |
| 902135AB | 2P+E, 63A-6h, 230V~. | 2P+T, 32A-6h, 230V~. | 3/54 |
| 902144AB | 3P+E 32A-6h, 400V~. | 3P+T, 32A-6h, 400V~. | 8/96 |
| 902154AB | 3P+N+E 32A-6h, 400V~. | 3P+N+T, 32A-6h, 400V~. | 8/96 |



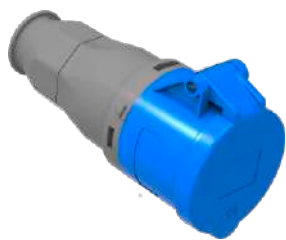
IP67 Industrial plug / *IP67. Fiche industrielle.*

| Ref. / Réf. | Description | Description | Ref. with pilot contact / Réf. avec contact pilote |  |
|-------------|-------------------------|-------------------------|--|--|
| 902431AB | 2P+E, 16A-6h, 230V~. | 2P+T, 16A-6h, 230V~. | --- | 8/144 |
| 902442AB | 3P+E, 16A-6h, 400V~. | 3P+T, 16A-6h, 400V~. | --- | 6/108 |
| 902452AB | 3P+N+E, 16A-6h, 400V~. | 3P+N+T, 16A-6h, 400V~. | --- | 4/72 |
| 902433AB | 2P+E, 32A-6h, 230V~. | 2P+T, 32A-6h, 230V~. | --- | 3/54 |
| 902444AB | 3P+E, 32A-6h, 400V~. | 3P+T, 32A-6h, 400V~. | --- | 3/54 |
| 902454AB | 3P+N+E, 32A-6h, 400V~. | 3P+N+T, 32A-6h, 400V~. | --- | 3/54 |
| 902435AB | 2P+E, 63A-6h, 230V~. | 2P+T, 63A-6h, 230V~. | 902435APB | 2/36 |
| 902446AB | 3P+E, 63A-6h, 400V~. | 3P+T, 63A-6h, 400V~. | 902446APB | 2/36 |
| 902456AB | 3P+N+E, 63A-6h, 400V~. | 3P+N+T, 63A-6h, 400V~. | 902456APB | 2/36 |
| 902437AB | 2P+E, 125A-6h, 230V~. | 2P+T, 125A-6h, 230V~. | 902437APB | 1/12 |
| 902448AB | 3P+E, 125A-6h, 400V~. | 3P+T, 125A-6h, 400V~. | 902448APB | 1/12 |
| 902458AB | 3P+N+E, 125A-6h, 400V~. | 3P+N+T, 125A-6h, 400V~. | 902458APB | 1/12 |




Phase inverter plug. IP44 / *Prise d'inverseur de phase. IP44.*

| Ref. / Réf. | Description | Description |  |
|-------------|------------------------|------------------------|---|
| 936152AB | 3P+N+E, 16A-6h, 400V~. | 3P+N+T, 16A-6h, 400V~. | 8/96 |
| 936154AB | 3P+N+E, 32A-6h, 400V~. | 3P+N+T, 32A-6h, 400V~. | 8/96 |



IP44. Industrial socket / IP44. Prise industrielle.

| Ref. / Réf. | Description | Description |  |
|-------------|------------------------|------------------------|---|
| 903131AB | 2P+E, 16A-6h, 230V~. | 2P+T, 16A-6h, 230V~. | 10/180 |
| 903142AB | 3P+E, 16A-6h, 400V~. | 3P+T, 16A-6h, 400V~. | 8/144 |
| 903152AB | 3P+N+E, 16A-6h, 400V~. | 3P+N+T, 16A-6h, 400V~. | 8/144 |
| 903133AB | 2P+E, 32A-6h, 230V~. | 2P+T, 32A-6h, 230V~. | 8/96 |
| 903144AB | 3P+E, 32A-6h, 400V~. | 3P+T, 32A-6h, 400V~. | 8/96 |
| 903154AB | 3P+N+E, 32A-6h, 400V~. | 3P+N+T, 32A-6h, 400V~. | 8/96 |



IP67. Industrial socket / IP67. Prise industrielle.

| Ref. / Réf. | Description | Description | Ref. with pilot contact / Réf. avec contact pilote |  |
|-------------|-------------------------|-------------------------|--|---|
| 903431AB | 2P+E, 16A-6h, 230V~. | 2P+T, 16A-6h, 230V~. | --- | 8/108 |
| 903442AB | 3P+E, 16A-6h, 400V~. | 3P+T, 16A-6h, 400V~. | --- | 6/108 |
| 903452AB | 3P+N+E, 16A-6h, 400V~. | 3P+N+T, 16A-6h, 400V~. | --- | 7/72 |
| 903433AB | 2P+E, 32A-6h, 230V~. | 2P+T, 32A-6h, 230V~. | --- | 3/54 |
| 903444AB | 3P+E, 32A-6h, 400V~. | 3P+T, 32A-6h, 400V~. | --- | 3/54 |
| 903454AB | 3P+N+E, 32A-6h, 400V~. | 3P+N+T, 32A-6h, 400V~. | --- | 3/54 |
| 903435AB | 2P+E, 63A-6h, 230V~. | 2P+T, 63A-6h, 230V~. | 903435APB | 1/18 |
| 903446AB | 3P+E, 63A-6h, 400V~. | 3P+T, 63A-6h, 400V~. | 903446APB | 1/18 |
| 903456AB | 3P+N+E, 63A-6h, 400V~. | 3P+N+T, 63A-6h, 400V~. | 903456APB | 1/18 |
| 903437AB | 2P+E, 125A-6h, 230V~. | 2P+T, 125A-6h, 230V~. | 903437APB | 1/12 |
| 903448AB | 3P+E, 125A-6h, 400V~. | 3P+T, 125A-6h, 400V~. | 903448APB | 1/12 |
| 903458AB | 3P+N+E, 125A-6h, 400V~. | 3P+N+T, 125A-6h, 400V~. | 903458APB | 1/12 |


Quote upon request / Demandez votre devis



Fitted plugs & sockets / *Prises et fiches coudées*




Fitted plugs IP44 / *Fiches tableau IP44.*

| Ref. / Réf. | Description | Description |  |
|-------------|------------------------|------------------------|---|
| 934131B | 2P+E, 16A-6h, 230V~. | 2P+T, 16A-6h, 230V~. | 10/180 |
| 934142B | 3P+E, 16A-6h, 400V~. | 3P+T, 16A-6h, 400V~. | 8/144 |
| 934152B | 3P+N+E, 16A-6h, 400V~. | 3P+N+T, 16A-6h, 400V~. | 8/144 |
| 934133B | 2P+E, 32A-6h, 230V~. | 2P+T, 32A-6h, 230V~. | 8/144 |
| 934144B | 3P+E, 32A-6h, 400V~. | 3P+T, 32A-6h, 400V~. | 8/144 |
| 934154B | 3P+N+E, 32A-6h, 400V~. | 3P+N+T, 32A-6h, 400V~. | 8/144 |





Fitted socket outlet IP44 / *Prises tableau inclinée IP44.*

| Ref. / Réf. | Description | Description | Frame |  |
|-------------|---|--|---------|---|
| 931121AB | 2P+E, 16A-6h, 230V~. | 2P+T, 16A-6h, 230V~. | MR1360B | 8/144 |
| 931142AB | 3P+E, 16A-6h, 400V~. | 3P+T, 16A-6h, 400V~. | MR1360B | 8/144 |
| 931152AB | 3P+N+E, 16A-6h, 400V~. | 3P+N+T, 16A-6h, 400V~. | MR1360B | 6/108 |
| 931123AB | 2P+E, 32A-6h, 230V~. | 2P+T, 32A-6h, 230V~. | KIT-B | 6/108 |
| 931144AB | 3P+E, 32A-6h, 400V~. | 3P+T, 32A-6h, 400V~. | KIT-B | 6/108 |
| 931154AB | 3P+N+E, 32A-6h, 400V~. | 3P+N+T, 32A-6h, 400V~. | MR1360B | 6/108 |
| 931156AB | 3P+N+E, 63A-6h, 400V~. | 3P+N+T, 63A-6h, 400V~. | MR1363B | 2/36 |
| 931156APB | 3P+N+E, 63A-6h, 400V~. With pilot contact. | 3P+N+T, 63A-6h, 400V~. Avec contact pilote. | MR1363B | 2/36 |



Fitted socket outlet 16A-6h / *Prises tableau 16A-6h.*

| Ref. / Réf. | Description | Description |  |
|--|--|---|---|
| 931131B | 2P+E, 16A-6h, 230V~. IP54. Schuko. | 2P+T, 16A-6h, 230V~. IP54. Schuko. | 25/450 |
| 931131FB  | 2P+E, 16A-6h, 230V~. IP44. French system. | 2P+T, 16A-6h, 230V~. IP44. Système français. | 30/540 |
| 931431B | 2P+E, 16A-6h, 230V~. IP67. Schuko. | 2P+T, 16A-6h, 230V~. IP67. Schuko. | 8/144 |



Fitted socket outlet IP67 / *Prises coudées IP67.*

| Ref. / Réf. | Description | Description | Frame |  |
|-------------|--|---|-----------|---|
| 931421AB | 2P+E, 16A-6h, 230V~. | 2P+T, 16A-6h, 230V~. | MR1360B | 6/108 |
| 931442AB | 3P+E, 16A-6h, 400V~. | 3P+T, 16A-6h, 400V~. | MR1360B | 6/108 |
| 931452AB | 3P+N+E, 16A-6h, 400V~. | 3P+N+T, 16A-6h, 400V~. | MR1360B | 6/108 |
| 931423AB | 2P+E, 32A-6h, 230V~. | 2P+T, 32A-6h, 230V~. | KIT-B | 4/72 |
| 931444AB | 3P+E, 32A-6h, 400V~. | 3P+T, 32A-6h, 400V~. | KIT-B | 4/72 |
| 931454AB | 3P+N+E, 32A-6h, 400V~. | 3P+N+T, 32A-6h, 400V~. | MR1360B | 4/72 |
| 931435AB | 2P+E, 63A-6h, 230V~. | 2P+T, 63A-6h, 230V~. | MR1363B | 2/36 |
| 931456AB | 3P+N+E, 63A-6h, 400V~. | 3P+N+T, 63A-6h, 400V~. | MR1363B | 2/36 |
| 931437AB | 2P+E, 125A-6h, 230V~. | 2P+T, 125A-6h, 230V~. | No frame* | 4/72 |
| 931448AB | 3P+E, 125A-6h, 400V~. | 3P+T, 125A-6h, 400V~. | No frame* | 4/72 |
| 931458AB | 3P+N+E, 125A-6h, 400V~. | 3P+N+T, 125A-6h, 400V~. | No frame* | 4/72 |
| 931435APB | 2P+E, 63A-6h, 230V~. With pilot contact. | 2P+T, 63A-6h, 230V~. Avec contact pilote. | MR1363B | 2/36 |
| 931146APB | 3P+E, 63A-6h, 230V~. With pilot contact. | 3P+T, 63A-6h, 230V~. Avec contact pilote. | MR1363B | 1/24 |
| 931456APB | 3P+N+E, 63A-6h, 400V~. With pilot contact. | 3P+N+T, 63A-6h, 400V~. Avec contact pilote. | MR1363B | 2/36 |
| 931437APB | 2P+E, 125A-6h, 230V~. With pilot contact. | 2P+T, 125A-6h, 230V~. Avec contact pilote. | No frame* | 4/72 |
| 931448APB | 3P+E, 125A-6h, 400V~. With pilot contact. | 3P+T, 125A-6h, 400V~. Avec contact pilote. | No frame* | 4/72 |
| 931458APB | 3P+N+E, 125A-6h, 400V~. With pilot contact. | 3P+N+T, 125A-6h, 400V~. Avec contact pilote. | No frame* | 4/72 |

*(smooth cover)



Surface Flush plugs & sockets / *Fiches et prises muraux*



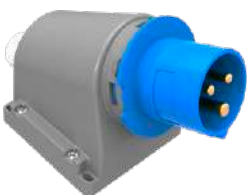
Surface Flush sockets IP44 / *Prises muraux IP44.*

| Ref. / Réf. | Description | Description | |
|-------------|------------------------|------------------------|------|
| 932131B | 2P+E, 16A-6h, 230V~. | 2P+T, 16A-6h, 230V~. | 3/54 |
| 932142B | 3P+E, 16A-6h, 400V~. | 3P+T, 16A-6h, 400V~. | 3/54 |
| 932152B | 3P+N+E, 16A-6h, 400V~. | 3P+N+T, 16A-6h, 400V~. | 3/54 |
| 932133B | 2P+E, 32A-6h, 230V~. | 2P+T, 32A-6h, 230V~. | 3/54 |
| 932144B | 3P+E, 32A-6h, 400V~. | 3P+T, 32A-6h, 400V~. | 3/54 |
| 932154B | 3P+N+E, 32A-6h, 400V~. | 3P+N+T, 32A-6h, 400V~. | 3/54 |



Surface Flush sockets IP67 / *Prises muraux IP67.*

| Ref. / Réf. | Description | Description | Ref. with pilot contact / Réf. avec contact pilote | |
|-------------|-------------------------|-------------------------|--|------|
| 932454B | 3P+N+E, 32A-6h, 400V~. | 3P+N+T, 32A-6h, 400V~. | --- | 3/54 |
| 932435B | 2P+E, 63A-6h, 230V~. | 2P+T, 63A-6h, 230V~. | 932435PB | 1/12 |
| 932446B | 3P+E, 63A-6h, 400V~. | 3P+T, 63A-6h, 400V~. | 932446PB | 1/12 |
| 932456B | 3P+N+E, 63A-6h, 400V~. | 3P+N+T, 63A-6h, 400V~. | 932456PB | 1/12 |
| 932437B | 2P+E, 125A-6h, 230V~. | 2P+T, 125A-6h, 230V~. | 932437PB | 1/12 |
| 932448B | 3P+E, 125A-6h, 400V~. | 3P+T, 125A-6h, 400V~. | 932448PB | 1/12 |
| 932458B | 3P+N+E, 125A-6h, 400V~. | 3P+N+T, 125A-6h, 400V~. | 932458PB | 1/4 |



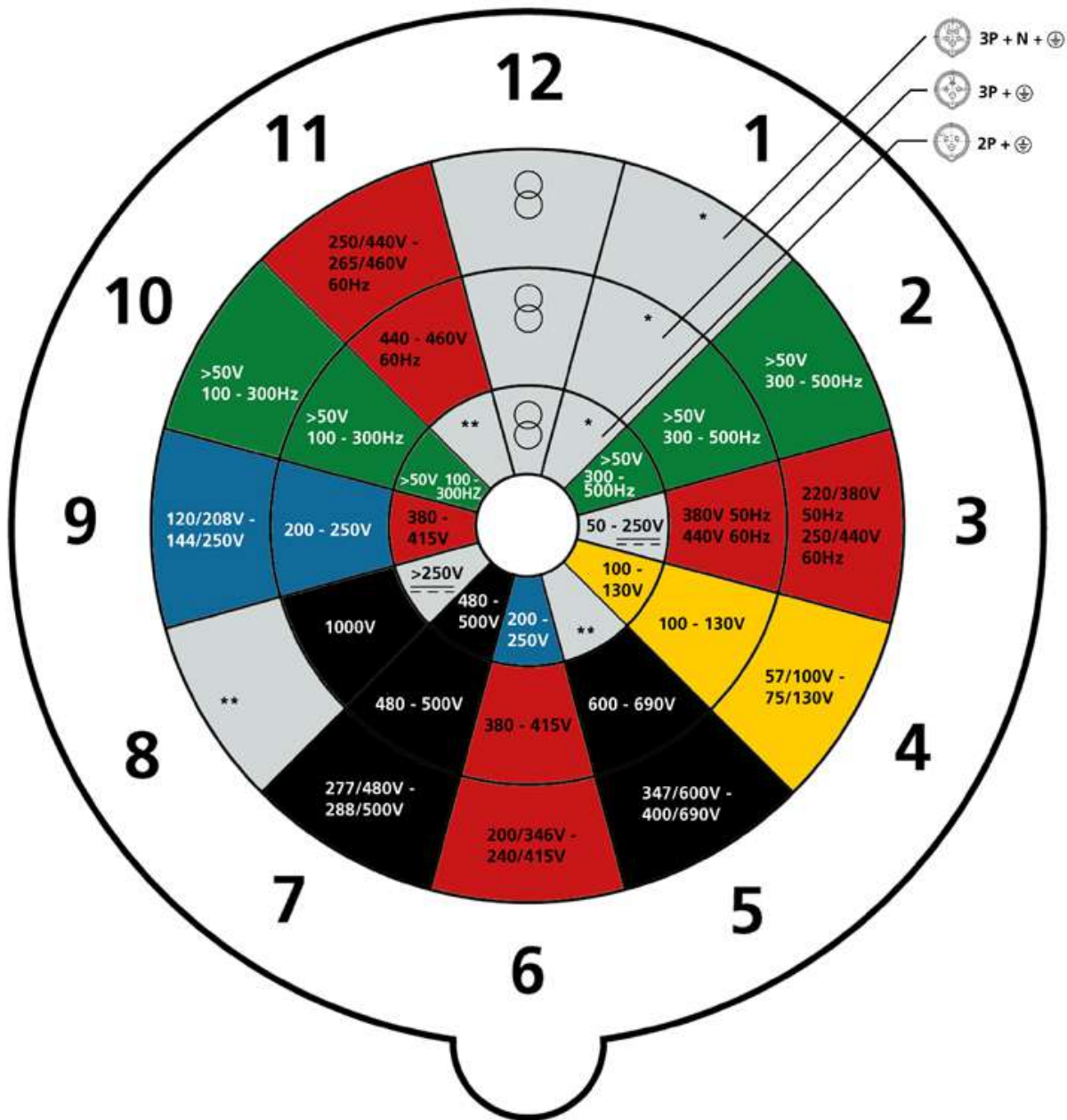
Surface Flush plugs IP44 / *Fiches muraux IP44.*

| Ref. / Réf. | Description | Description | |
|-------------|------------------------|------------------------|------|
| 935131B | 2P+E, 16A-6h, 230V~. | 2P+T, 16A-6h, 230V~. | 6/72 |
| 935142B | 3P+E, 16A-6h, 400V~. | 3P+T, 16A-6h, 400V~. | 6/72 |
| 935152B | 3P+N+E, 16A-6h, 400V~. | 3P+N+T, 16A-6h, 400V~. | 3/54 |
| 935133B | 2P+E, 32A-6h, 230V~. | 2P+T, 32A-6h, 230V~. | 3/54 |
| 935144B | 3P+E, 32A-6h, 400V~. | 3P+T, 32A-6h, 400V~. | 3/36 |
| 935154B | 3P+N+E, 32A-6h, 400V~. | 3P+N+T, 32A-6h, 400V~. | 3/54 |



Adapter IP44 / *Adaptateur IP44.*

| Ref. / Réf. | Description | Description | |
|-------------|-------------------|--------------------|------|
| 813181 | 2P+E, 16A, 230V~. | 2P+T, 16A-, 230V~. | 1/10 |



| Assigned working tension (V) | Colour ⁽¹⁾ |
|------------------------------|-----------------------|
| 20 - 25 | Violet |
| 40 - 50 | White |
| 100 - 130 | Yellow |
| 200 - 250 | Blue |
| 380 - 480 | Red |
| 500 - 600 | Black |

* Without standard version.

** Without standard version for 63A-6h & 125A-6h.

(1) For frequencies from 60 to 500 Hz, the colour green can be used, if necessary, in combination with the colour indicating the voltage of operation.