

ION





NEW REFERENCES

We take functionality and security to a new level.

Our multipoint socket ION grows to offer a wide range of versatile and safe products. We are expanding this range with new references. These references include overload protection, surge protection and USB charging.

Reference with Overvoltage: Protection of connected equipment from voltage peaks caused by weather events. designed for sensitive equipment such as computers, televisions, etc. ...

Reference with Overvoltage and Overload Protection: In addition to the above protection, there is protection against over-consumption. If the maximum power is exceeded, it will cut off the current to avoid fire hazards.

Reference with USB port: Offers a solution to the growing need for charging mobile devices. It allows charging without the need for a transformer, thus helping the environment. With two charging ports: Type A and C. Very fast charging. Output 3.1 A



Discover all the details of our ION range!

The ION range reflects Solera's commitment to innovation and quality.



References with overload protection

Protects when the load or equipment connected to the socket exceeds the maximum permissible power. When there is excess consumption (current), the temperature of the protection mechanism also rises. This temperature rise causes the circuit breaker to open and cut off the power to the socket. This protection prevents overheating, which can lead to fire or dangerous situations.

References with overvoltage protection

Protects connected equipment from voltage peaks caused by meteorological phenomena.

Ideal for connecting sensitive equipment such as computers, televisions, etc...



Reference with USB Port A and C

Offers a solution to the growing need for charging mobile devices. Allows charging without the need for a transformer, thus helping the environment.

With two charging ports: Type A and C. Very fast charging. Supplies 3.1 A.

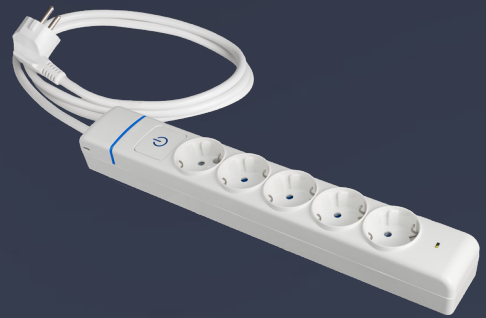
Discover all the technical information about the range



ION



A range of multiple sockets designed to modern needs for connectivity and electrical safety. A range full of design and functionality.



51LS

Cable extension with 5 sockets 2P+E, 16A 250V~With light switch. 1,5m of cable H05VV-F 3G1,5mm². With surge protection

[+ Information](#)



61ILS

Cable extension with 6 sockets
2P+E,16A 250V~With light switch.
1,5m of cable H05VV-F 3G1,5mm².
With surge protection

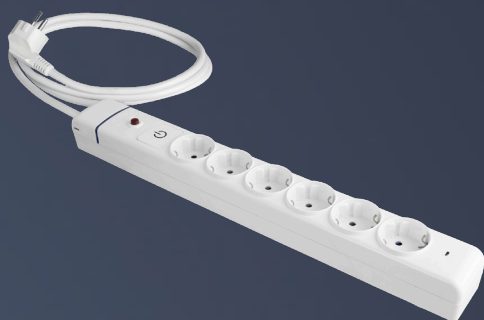
[+ Information](#)



41ILSO

Cable extension with 4 sockets
2P+E,16A 250V~With light switch.
1,5m of cable H05VV-F 3G1,5mm².
With surge and overload protector.

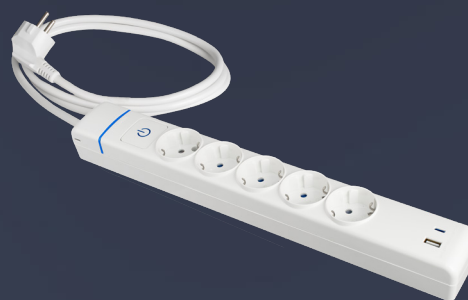
[+ Information](#)



61ILSO

Cable extension with 6 sockets
2P+E,16A 250V~With light switch.
1,5m of cable H05VV-F 3G1,5mm².
With surge and overload protector.

[+ Information](#)



51ILAC

Cable extension with 5 sockets
2P+E,16A 250V~With light switch.
1,5m of cable H05VV-F 3G1,5mm².
+USB A+USBC

[+ Information](#)

ION range



Ref. 8002P

Multiple socket of 2 sockets 2P+E, 16A 250V~.



Ref. 8002PIL

Multiple socket of 2 sockets 2P+E, 16A 250V~. With light switch.



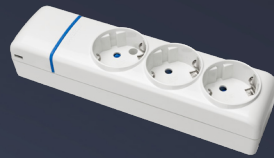
Ref. 8012P

Cable extension with 2 sockets 2P+E, 16A 250V~. 1.5m of cable. H05VV-F 3G1,5mm².



Ref. 8012PIL

Cable extension with 2 sockets 2P+E, 16A 250V~. With light switch. 1.5m of cable H05VV-F 3G1,5mm².



Ref. 8003P

Multiple socket of 3 sockets 2P+E, 16A 250V~.



Ref. 8003PIL

Multiple socket of 3 sockets 2P+E, 16A 250V~. With light switch.



Ref. 8013P

Cable extension with 3 sockets 2P+E, 16A 250V~. 1.5m of cable. H05VV-F 3G1,5mm².



Ref. 8013PIL

Cable extension with 3 sockets 2P+E, 16A 250V~. With light switch. 1.5m of cable H05VV-F 3G1,5mm².



Ref. 8004P

Multiple socket of 4 sockets 2P+E, 16A 250V~.



Ref. 8004PIL

Multiple socket of 4 sockets 2P+E, 16A 250V~. With light switch.



Ref. 8014P

Cable extension with 4 sockets 2P+E, 16A 250V~. 1.5m of cable. H05VV-F 3G1,5mm².



Ref. 8014PIL

Cable extension with 4 sockets 2P+E, 16A 250V~. With light switch. 1.5m of cable H05VV-F 3G1,5mm².



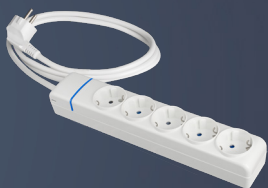
Ref. 8005P

Multiple socket of 5 sockets 2P+E, 16A 250V~.



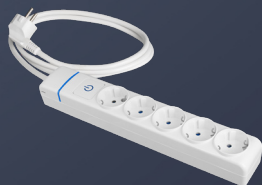
Ref. 8005PIL

Multiple socket of 5 sockets 2P+E, 16A 250V~. With light switch.



Ref. 8015P

Cable extension with 5 sockets 2P+E, 16A 250V~1.5m of cable. H05VV-F 3G1,5mm².



Ref. 8015IL

Cable extension with 5 sockets 2P+E, 16A 250V~. With light switch. 1.5m of cable H05VV-F 3G1,5mm².



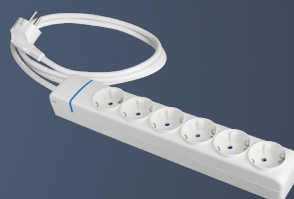
Ref. 8006P

Multiple socket of 6 sockets 2P+E, 16A 250V~.



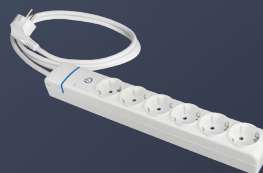
Ref. 8006PIL

Multiple socket of 6 sockets 2P+E, 16A 250V~. With light switch.



Ref. 8016P

Cable extension with 6 sockets 2P+E, 16A 250V~1.5m of cable. H05VV-F 3G1,5mm².



Ref. 8016IL

Cable extension with 6 sockets 2P+E, 16A 250V~. With light switch. 1.5m of cable H05VV-F 3G1,5mm².

ION



Solera S.A International



solera_international



@soleras.a.9271



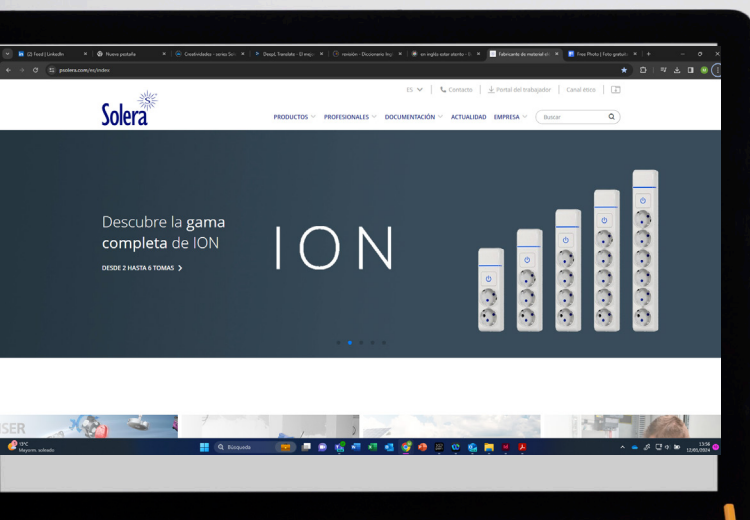
www.psolera.com



solera@psolera.com



export@psolera.com



SERIE ION

Portalámparas y Accesorios Solera S.A.
C/ Villa de Madrid, 53 46988 Paterna (Valencia) España-Spain


Solera

ED.01