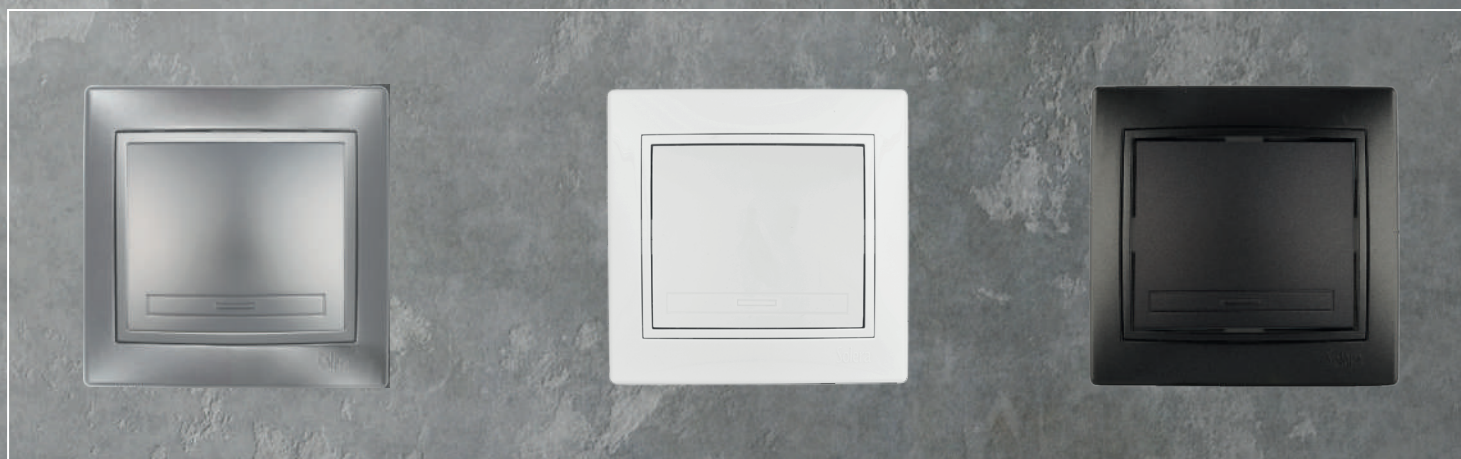


europa

Switch range

Solera[®]





New materials

New colours

The **Europa range** presents new finishes with a neutral and elegant design that blend beautifully into any space. The new finishes in graphite and silver turn functionality into a design element, without ever losing the durability inherent to the series.

With an extra thin inner frame, the Europa series allows for a fully built-in, flush wall with truly discreet lines.

This series includes a variety of options, from switch mechanisms to sockets and wall surfaces.

Frame:
-1 mm thick
-Zinc plating
-Linkable

Additional clamp
fastening

Made of
polycarbonate

All conductive
materials are made
from CuSn94



Mechanisms with
2.1A USB socket

Certification



Combine colours and give your home a fresh touch



Available in three finishes: **white, silver and graphite.**

Choose from a wide range of high-quality, durable functions for the mechanism that best suits your needs and setting, and we'll add a touch of style and design.





Switch & sockets

Wide variety of models



2-way switch 10AX 250V~.

□ ERP02U



Double 2-way switch
10AX 250V~.

□ ERP12U



Crossover switch
10AX 250V~.

□ ERP09U



2-way switch / light switch
10AX 250V~.

□ ERP021LU



2 pole switch
10AX 250V~

□ ERP22U



Blind switch 10A 250V~.

□ ERP20U



Push button 10A 250V ~.

□ ERP03U



Lighted push button
10A 250V ~.

□ ERP041LU



Blind switch
10A 250V~.

□ ERP21U



LED dimmer. Max. 250W.

□ ERP31LEDU



Card switch.

□ ERP01TU



Buzzer.

□ ERP1ZU



Stair pilot.
Include 4 different colours.

□ ERP90U



Pilot with 3h reserve.
Initial charging time: 24h.
Disconnect switch.

□ ERP90CR3U



Cable outlet 4x2,5 mm².

□ ERP40U



Blind cover.

□ ERP75U

Switch & sockets

Wide variety of models



Socket 2P+E, 16A 250V~.

□ ERP60U



French socket 2P+E,
16A 250V~.

□ ERP60FU



Socket + USB POWER: 5.0V
~; 2.1A; Total 10,5W.

□ ERP60USB-U



Socket + 2 USB (A+C)
POWER: 5.0V~; 2.1A; Total 10,5W.

□ ERP60USBCU



French socket + USB POWER:
5.0V~; 2.1A; Total 10,5W.

□ ERP60FUSBU



Double socket 2P+T,
16A 250V~.

□ ERP60/2U ■ ERP60/2NGU
■ ERP60/2AU



2 USB POWER: 5.0V~; 4.2A
(total); Total 21W.

□ ERP2USBU



Telephone connector RJ11.

□ ERP84U



Data connector RJ45.
Cat. 6.

□ ERP88U



Double data connector
RJ45. Cat. 6.

□ ERP88/2U



TV & radio connector.

□ ERP46U



Final connector for TV &
radio.

□ ERP47U



Final connector for Satellite,

□ ERP48U



Box for surface mounting.

□ ERP-100U



Accessorie to expand ref.
ERP-100U.

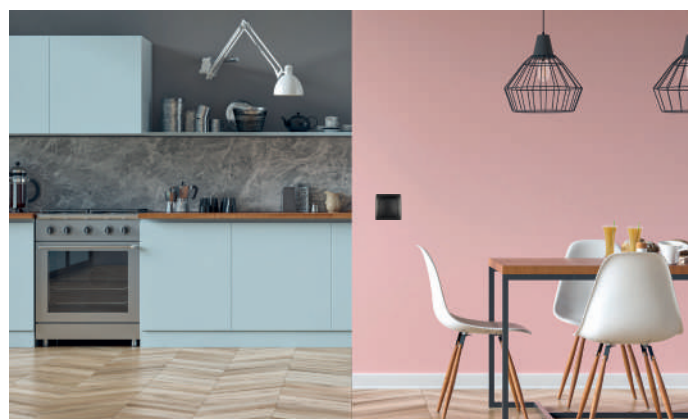
□ ERP-CP100U



2 way switch + socket +
USB.

□ KIT-ERP-ROOM

Little details for big projects



When simple takes centre stage.

The **Europa series** can be easily incorporated into any architectural project. Creating a balance between discreet design and functionality, it combines straight lines with maximum safety, durability and reliability.

The wide selection of models within our Europa series means we can adapt to the needs of every space and user, perfectly integrating each element.

Frameless switches

Wide variety of models



2-way switch 10AX 250V~.

□ ERP02QC ■ ERP02NGQC
■ ERP02AQC



Double 2-way switch 10AX 250V~.

□ ERP12QC ■ ERP12NGQC
■ ERP12AQC



Crossover switch 10AX 250V~.

□ ERP09QC ■ ERP09NGQC
■ ERP09AQC



Lighted 2-way switch 10AX 250V~.

□ ERP02ILQC ■ ERP02ILNGQC
■ ERP02ILAQC



Interruptor bipolar 10AX 250V~

□ ERP22QC ■ ERP22NGQC
■ ERP22AQC



Blind switch 10A 250V~.

□ ERP20QC ■ ERP20NGQC
■ ERP20AQC



Push button 10A 250V ~.

□ ERP03QC ■ ERP03NGQC
■ ERP03AQC



Lighted push button 10A 250V ~.

□ ERP04ILQC ■ ERP04ILNGQC
■ ERP04ILAQC



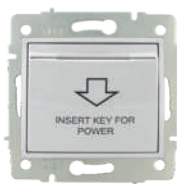
Blind switch 10A 250V~. 3 posiciones.

□ ERP21



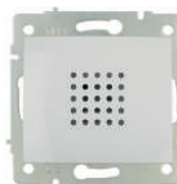
LED dimmer. Max. 250W.

□ ERP31LED ■ ERP31LEDNG
■ ERP31LEDA



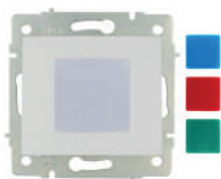
Card switch.

□ ERP01T



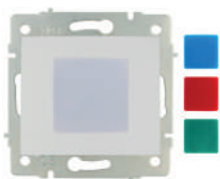
Buzzer.

□ ERP1Z



Stair pilot. Include 4 different colours.

□ ERP90



Pilot with 3h reserve. Initial charging time: 24h. Disconnect switch.

□ ERP90CR3



Cable outlet 4x2,5 mm².

□ ERP40 ■ ERP40NG
■ ERP40A



Blind cover.

□ ERP75 ■ ERP75NG
■ ERP75A



Socket 2P+E, 16A 250V~.

- ERP60 ■ ERP60NG
- ERP60A



French socket 2P+E,
16A 250V~.

- ERP60F



Socket + USB POWER: 5.0V
~; 2.1A; Total 10,5W.

- ERP60USB ■ ERP60USBNG
- ERP60USBA



Socket + 2 USB (A+C)
POWER: 5.0V~; 2.1A; Total 10,5W.

- ERP60USBC



French socket + USB POWER:
5.0V~; 2.1A; Total 10,5W.

- ERP60FUSB



2 USB POWER: 5.0V~; 4.2A
(total); Total 21W.

- ERP2USB



Telephone connector RJ11.

- ERP84 ■ ERP84NG
- ERP84A



Data connector RJ45.
Cat. 6.

- ERP88 ■ ERP88NG
- ERP88A



Double data connector
RJ45. Cat. 6.

- ERP88/2 ■ ERP88/2NG
- ERP88/2A



TV & radio connector

- ERP46



Final connector for TV &
radio.

- ERP47



Final connector for Satellite,
TV & radio.

- ERP48

Frames



Ref.	Elements	Dimensions
ERP71U □	1	83 x 81 x 10
ERP71AU ■		
ERP71NGU ■		
ERP71NU ■		
ERP72U □	2	154 x 81 x 10 Horizontal
ERP72AU ■		
ERP72NGU ■		
ERP72NU ■		
ERP73U □	3	225 x 81 x 10 Horizontal
ERP73AU ■		
ERP73NGU ■		
ERP73NU ■		

Ref.	Elements	Dimensions
ERP74U □	4	296 x 81 x 10 Horizontal
ERP74AU ■		
ERP74NGU ■		
ERP74NU ■		
ERP62U □	2	81 x 154 x 10 Vertical
ERP62AU ■		
ERP62NGU ■		
ERP62NU ■		
ERP63U □	3	81 x 225 x 10 Vertical
ERP63AU ■		
ERP63NGU ■		
ERP63NU ■		

europa

